

February 2023

London Luton Airport Expansion

Planning Inspectorate Scheme Ref: TR020001

Volume 4 Plans and Sections

4.09 General Arrangement Drawings (Part 2 of 3)

Application Document Ref: TR020001/APP/4.09

APFP Regulation 5(2)(o)

The Planning Act 2008

The Infrastructure Planning (Applications: Prescribed Forms and Procedure) Regulations 2009

London Luton Airport Expansion Development Consent Order 202x

4.09 GENERAL ARRANGEMENT DRAWINGS (PART 2 OF 3)

Regulation number:	Regulation 5(2)(o)
Planning Inspectorate Scheme Reference:	TR020001
Document Reference:	TR020001/APP/4.09
Author:	Luton Rising

Version	Date	Status of Version
Issue 1	February 2023	Application issue

Contents

	Page	
1	General Arrangement Drawings	1
1.1	Purpose of this document	1
1.2	Scope and format of the General Arrangements Drawings	1
1.3	General Arrangement Drawings list	1

1 GENERAL ARRANGEMENT DRAWINGS

1.1 Purpose of this document

- 1.1.1 Luton Rising (a trading name of London Luton Airport Limited), owners of London Luton Airport (the Applicant) has submitted an application under section 37 of the Planning Act 2008 for an order to grant development consent for the expansion of London Luton Airport (the Proposed Development).
- 1.1.2 This document is part of a suite of documents which forms part of the application for development consent. A full description of all the Application Documents is provided in the **Introduction to the Application [TR020001/APP/1.03]** which also forms part of the suite of application documents.
- 1.1.3 This document is included in the application to comply with Regulation 5(2)(o) of the Infrastructure Planning (Applications: Prescribed Forms and Procedures) Regulations 2009 (“the 2009 Regulations”), which requires:
- i. 5(2)(o) ‘any other plans, drawings and sections necessary to describe the proposals for which development consent is sought, showing details of design, external appearance, and the preferred layout of buildings or structures, drainage, surface water management, means of vehicular and pedestrian access, any car parking to be provided, and means of landscaping’
- 1.1.4 As this document is part of the application documentation, it should be read alongside, and is informed by, the other application documents. In particular, the plans should be read alongside Schedule 1 of the **draft Order [TR020001/APP/2.01]** and the **Work Plans [TR020001/APP/4.04]**.

1.2 Scope and format of the General Arrangements Drawings

- 1.2.1 The purpose of the General Arrangement Drawings is to illustrate what certain parts of the Proposed Development might look like. This includes showing indicative floorplans and elevations of terminal and ancillary buildings as well as structures such as the surface movement radar.
- 1.2.2 The information shown on these drawings is in line with the preliminary design status of the project and is therefore indicative. Parameters for the various works are provided for in the **draft Order [TR020001/APP/2.01]** and any detailed design will be in accordance with those parameters and the other constraints imposed by the draft Order.
- 1.2.3 Drawings showing road junction mitigation works that will be necessary as a result of the Proposed Development are shown in the **Transport Assessment [TR020001/APP/7.02]** alongside an explanation of why these are needed and what they entail. Those drawings are included in the Transport Assessment, rather than in this document, because they contain information which is necessary to inform the approach to the Transport Assessment.

1.3 General Arrangement Drawings list

Drawing Name	Drawing Number	Work No.	Document Part
Assessment Phase 1 Earthworks Proposed Indicative Landform	LLADCO-3C-ARP-WHS-BEW-DR-GT-0401	1a	Part 1 of 3
Assessment Phase 2a Earthworks Proposed Indicative Landform	LLADCO-3C-ARP-WHS-BEW-DR-GT-0403	1a	Part 1 of 3
Assessment Phase 2b Earthworks Proposed Indicative Landform	LLADCO-3C-ARP-WHS-BEW-DR-GT-0405	1a	Part 1 of 3
Indicative Surface Movement Radar Plan & Section	LLADCO-3C-ACM-AIR-MS-DR-CE-0001	2a(02)	Part 1 of 3
Indicative Fire Training Ground Plan & Section	LLADCO-3C-ACM-AIR-FTR-DR-CE-0001	2d	Part 1 of 3
Indicative Engine Run-Up Bay Plan & Section	LLADCO-3C-ACM-AIR-ENG-DR-CE-0001	2f,2g	Part 1 of 3
Indicative General Arrangement Terminal 1 New Pier C & External Canopy - Plan & Section	LLADCO-3C-IDM-STR-TR1-DR-AR-0001	3a	Part 1 of 3
Indicative General Arrangement Terminal 1 South Extension	LLADCO-3C-IDM-STR-TR1-DR-AR-0004	3a(03)	Part 1 of 3
Indicative General Arrangement Terminal 1 North Extensions	LLADCO-3C-IDM-STR-TR1-DR-AR-0007	3a(02) / 3a(04)	Part 1 of 3
Indicative General Arrangement Terminal 1 Baggage Hall Extensions Plan & Section	LLADCO-3C-IDM-STR-TR1-DR-AR-0008	3a(05)	Part 1 of 3
Indicative Terminal 2 General Arrangement Overall Zone Use Level 00 Assessment Phase 2a	LLADCO-3C-ACM-AIR-TER-DR-AR-0103	3b(01)	Part 1 of 3
Indicative Terminal 2 General Arrangement Overall Zone Use Level 00 Assessment Phase 2b	LLADCO-3C-ACM-AIR-TER-DR-AR-0104	3b(02)	Part 1 of 3

Drawing Name	Drawing Number	Work No.	Document Part
Indicative Terminal 2 General Arrangement Overall Zone Use Level 01 Assessment Phase 2a	LLADCO-3C-ACM-AIR-TER-DR-AR-0105	3b(01)	Part 1 of 3
Indicative Terminal 2 General Arrangement Overall Zone Use Level 01 Assessment Phase 2b	LLADCO-3C-ACM-AIR-TER-DR-AR-0106	3b(02)	Part 1 of 3
Indicative Terminal 2 General Arrangement Main Building Zone Use Level 00 Assessment Phase 2a	LLADCO-3C-ACM-AIR-TER-DR-AR-0107	3b(01)	Part 1 of 3
Indicative Terminal 2 General Arrangement Main Building Zone Use Level 00 Assessment Phase 2b	LLADCO-3C-ACM-AIR-TER-DR-AR-0108	3b(02)	Part 1 of 3
Indicative Terminal 2 General Arrangement Main Building Zone Use Level 01 Assessment Phase 2a	LLADCO-3C-ACM-AIR-TER-DR-AR-0109	3b(01)	Part 1 of 3
Indicative Terminal 2 General Arrangement Main Building Zone Use Level 01 Assessment Phase 2b	LLADCO-3C-ACM-AIR-TER-DR-AR-0110	3b(02)	Part 1 of 3
Indicative Terminal 2 Cross Sections Assessment Phase 2b	LLADCO-3C-ACM-AIR-TER-DR-AR-0401	3b(01)	Part 1 of 3
Indicative Terminal 2 Pier Cross Sections Assessment Phase 2b	LLADCO-3C-ACM-AIR-TER-DR-AR-0402	3b(02)	Part 1 of 3
Indicative Terminal 2 General Arrangement Floor Plan West Pier Level 00 Assessment Phase 2b	LLADCO-3C-ACM-AIR-WP2-DR-AR-0111	3c(01)	Part 1 of 3
Indicative Terminal 2 General Arrangement Floor Plan West Pier Level 01 Assessment Phase 2b	LLADCO-3C-ACM-AIR-WP2-DR-AR-0112	3c(01)	Part 1 of 3
Indicative Terminal 2 General Arrangement Floor Plan East Pier Level 00 Assessment Phase 2b	LLADCO-3C-ACM-AIR-EP2-DR-AR-0113	3c(02)	Part 1 of 3
Indicative Terminal 2 General Arrangement Floor Plan East Pier Level 01 Assessment Phase 2b	LLADCO-3C-ACM-AIR-EP2-DR-AR-0114	3c(02)	Part 1 of 3
Indicative Coach Station Sections & Elevations	LLADCO-3C-CAP-STR-SFA-PRK-AR-1383	3d	Part 1 of 3
Indicative Luton Dart Extension- Plan and Section	LLADCO-3C-ARP-RAL-MPT-DR-AR-6002	3g	Part 1 of 3
Indicative Energy Centre & Terminal 2 Service Yard Welfare Unit Sections & Elevations	LLADCO-3C-CAP-STR-WRH-WRH-AR-1312	3h	Part 1 of 3
Indicative Airport Operations and Maintenance Elevations	LLADCO-3C-CAP-STR-WRH-AR-1354	3i	Part 1 of 3
Indicative Hotel Elevations	LLADCO-3C-CAP-STR-HTL-DR-AR-1273	4a	Part 2 of 3
Indicative Hangar A & B Elevations	LLADCO-3C-CAP-STR-WRH-WRH-AR-1373	4b	Part 2 of 3
Indicative Layout for Fuel Storage Facility	LLADCO-3C-ACM-AIR-FFA-DR-CE-0002	4c	Part 2 of 3
Indicative General Arrangement Above Ground Fuel Installation	LLADCO-3C-ACM-AIR-FFA-DR-CE-0005	4c	Part 2 of 3
Indicative Solar Battery Storage Elevations	LLADCO-3C-CAP-STR-WRH-DR-AR-1393	4e	Part 2 of 3
Indicative Airside-Landside Boundary Sections	LLADCO-3C-ACM-AIR-FEN-DR-CE-0005	4f	Part 2 of 3
Indicative General Arrangement Airfield Fencing Assessment Phase 1	LLADCO-3C-ACM-AIR-FEN-DR-CE-0006	4f	Part 2 of 3
Indicative General Arrangement Airfield Fencing Assessment Phase 2a	LLADCO-3C-ACM-AIR-FEN-DR-CE-0002	4f	Part 2 of 3
Indicative Airfield Fencing Layout Assessment Phase 2b	LLADCO-3C-ACM-AIR-FEN-DR-CE-0001	4f	Part 2 of 3
Indicative Deck & Surface Carpark Elevations	LLADCO-3C-CAP-STR-PRK-DR-AR-1413	4k(01)	Part 2 of 3
Indicative Deck & Surface Parking Elevations	LLADCO-3C-CAP-STR-PRK-DR-AR-1313	4o(01) / 4o(02)	Part 2 of 3
Indicative General Arrangement Solar Car Port	LLADCO-3C-ACM-INF-MS-DR-AR-0001	4p(02) / 4q(02)	Part 2 of 3
Indicative Forecourt Multistorey Car Park Typical Plan	LLADCO-3C-CAP-STR-PRK-DR-AR-1208	4r	Part 2 of 3
Indicative Multistorey Car Park Elevations	LLADCO-3C-CAP-STR-PRK-DR-AR-1210	4r	Part 2 of 3
Indicative Police Station Elevations	LLADCO-3C-CAP-STR-OFC-OFC-AR-1342	4u	Part 2 of 3
Indicative Substation Layout & Elevations	LLADCO-3C-ACM-AIR-UTL-DR-CE-0020	4w / 4x	Part 2 of 3

Drawing Name	Drawing Number	Work No.	Document Part
Airport Access Road Indicative Highways General Arrangement Key plan	LLADCO-3C-ARP-WHS-HWM-DR-HY-0100	6a(01), 6a(02), 6a(03)	Part 3 of 3
Airport Access Road Indicative Highways General Arrangement Sheet 1 of 10	LLADCO-3C-ARP-SFA-HWM-DR-HY-0101	6a(01), 6a(02), 6a(03)	Part 3 of 3
Airport Access Road Indicative Highways General Arrangement Sheet 2 of 10	LLADCO-3C-ARP-SFA-HWM-DR-HY-0102	6a(01), 6a(02), 6a(03)	Part 3 of 3
Airport Access Road Indicative Highways General Arrangement Sheet 3 of 10	LLADCO-3C-ARP-SFA-HWM-DR-HY-0103	6a(01), 6a(02), 6a(03)	Part 3 of 3
Airport Access Road Indicative Highways General Arrangement Sheet 4 of 10	LLADCO-3C-ARP-SFA-HWM-DR-HY-0104	6a(01), 6a(02), 6a(03)	Part 3 of 3
Airport Access Road Indicative Highways General Arrangement Sheet 5 of 10	LLADCO-3C-ARP-SFA-HWM-DR-HY-0105	6a(01), 6a(02), 6a(03)	Part 3 of 3
Airport Access Road Indicative Highways General Arrangement Sheet 6 of 10	LLADCO-3C-ARP-SFA-HWM-DR-HY-0106	6a(01), 6a(02), 6a(03)	Part 3 of 3
Airport Access Road Indicative Highways General Arrangement Sheet 7 of 10	LLADCO-3C-ARP-SFA-HWM-DR-HY-0107	6a(01), 6a(02), 6a(03)	Part 3 of 3
Airport Access Road Indicative Highways General Arrangement Sheet 8 of 10	LLADCO-3C-ARP-SFA-HWM-DR-HY-0108	6a(01), 6a(02), 6a(03)	Part 3 of 3
Airport Access Road Indicative Highways General Arrangement Sheet 9 of 10	LLADCO-3C-ARP-SFA-HWM-DR-HY-0109	6a(01), 6a(02), 6a(03)	Part 3 of 3
Airport Access Road Indicative Highways General Arrangement Sheet 10 of 10	LLADCO-3C-ARP-SFA-HWM-DR-HY-0110	6a(01), 6a(02), 6a(03)	Part 3 of 3
Airport Access Road Indicative Highways Cross Sections Sheet 1 of 4	LLADCO-3C-ARP-SFA-HWM-DR-HY-0501	6a(01), 6a(02), 6a(03)	Part 3 of 3
Airport Access Road Indicative Highways Cross Sections Sheet 2 of 4	LLADCO-3C-ARP-SFA-HWM-DR-HY-0502	6a(01), 6a(02), 6a(03)	Part 3 of 3
Airport Access Road Indicative Highways Cross Sections Sheet 3 of 4	LLADCO-3C-ARP-SFA-HWM-DR-HY-0503	6a(01), 6a(02), 6a(03)	Part 3 of 3
Airport Access Road Indicative Highways Cross Sections Sheet 4 of 4	LLADCO-3C-ARP-SFA-HWM-DR-HY-0504	6a(01), 6a(02), 6a(03)	Part 3 of 3

This drawing may contain mapping by permission of Ordnance Survey on behalf of HMSO © Crown Copyright and database right 2022. Ordnance Survey 0100031673. All structure positions are indicative. The proposed works will be subject to detailed design development. The changes will be within limits of deviation specified in the Development Consent Order.

- NOTES**
1. This drawing is an indicative layout and can only be used for information purposes.
 2. Exact details concerning configuration and dimensions will be determined and designed at the detailed design stage in line with provisions of the DCO.
 3. Parameter heights are shown in metres - above ordnance datum (AOD).
 4. For wider context, refer to proposed facility no.16 on the Scheme Layout Plans (TR020001/APP/4.02).

- KEY**
- 177.00 Parameter height (AOD)
 - Parameter height lines
 - - - Maximum Parameter height lines



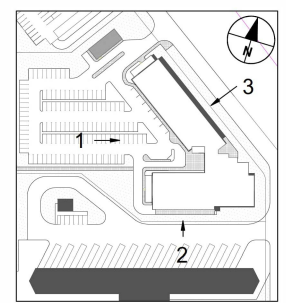
1 West Elevation
0 5 10 m
1:200 SCALE @A1



2 South Elevation
0 5 10 m
1:200 SCALE @A1

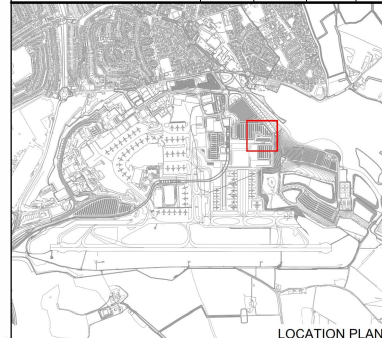


3 Side Elevation - North East
0 5 10 m
1:200 SCALE @A1



INDICATIVE LAYOUT

DCO Submission	LC	GRM	GU	27-02-23	P01
Revision History	Drawn	Checked	Approved	Date	Rev.



Luton Rising
Our airport. Our community. Our planet.
Luton Rising
Hart House Business Centre
Kimpton Road, Luton, LU2 0LA
www.lutonrising.org.uk

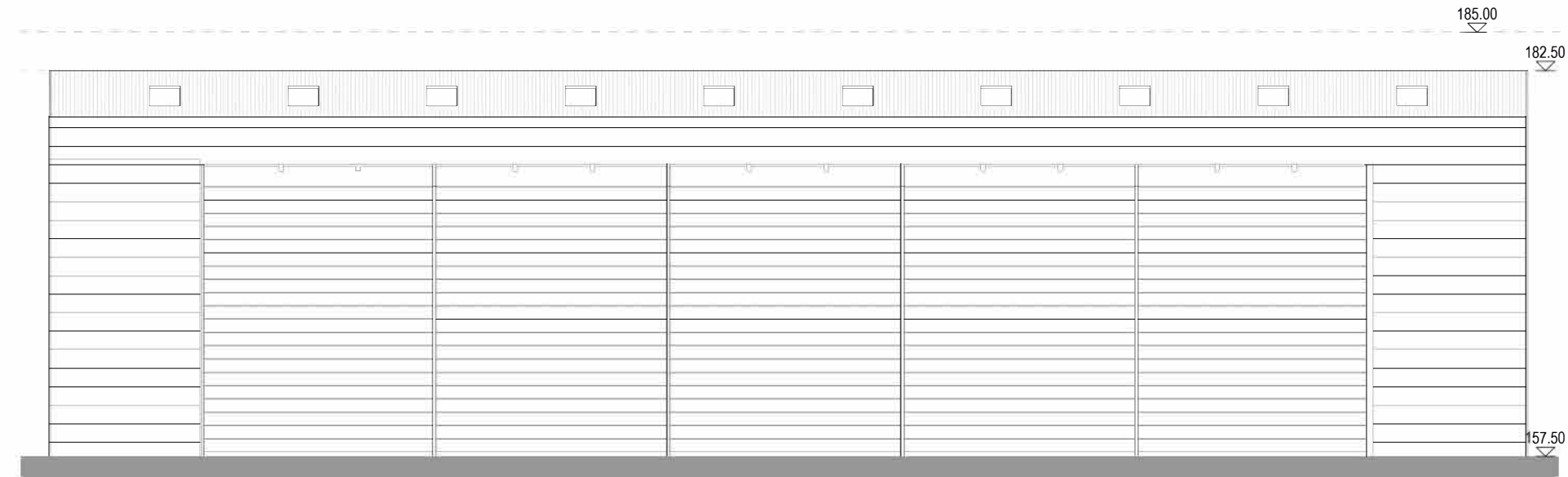
London Luton Airport Development Consent Order

Drawing Title
INDICATIVE HOTEL ELEVATIONS

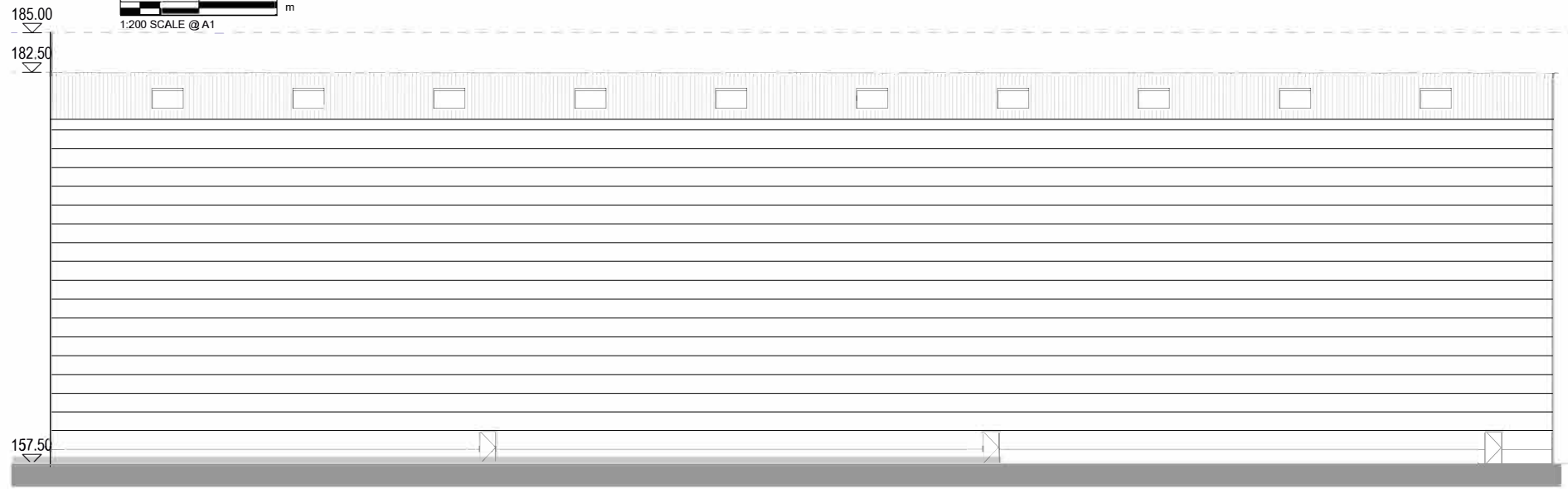
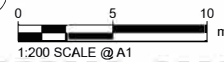
Purpose of issue				Suitability		
DCO SUBMISSION				S6		
Drawn	Checked	Approved	Date	Scale	Size	
LC	GRM	GU	27-02-23	1:200	A1	
DCO Application Ref.		A/PPP Regulation		DCO Document Ref.		
TR020001		5(2)(a)		TR020001/APP/4.9		
Drawing Number						Revision
LLADCO-3C-CAP-STR-HTL-DR-AR-1273						P01
Project - Phase - Originator - AssetZone - Sub Asset - Type - Discp - Number						

- NOTES**
1. This drawing is an indicative layout and can only be used for information purposes.
 2. Exact details concerning configuration and dimensions will be determined and designed at the detailed design stage in line with provisions of the DCO.
 3. Parameter heights are shown in metres - above ordnance datum (AOD).
 4. For wider context, refer to proposed facility no.18 on the Scheme Layout Plans (TR020001/APP/4.02).

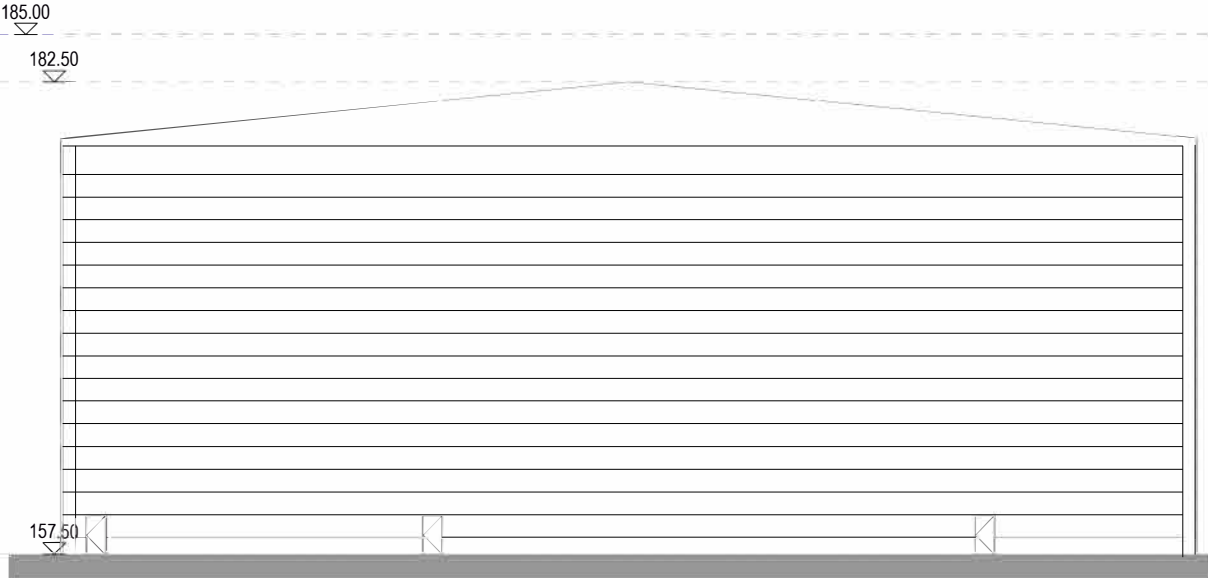
- KEY**
- 177.00 Parameter height (AOD)
 - Parameter height lines
 - Maximum Parameter height lines



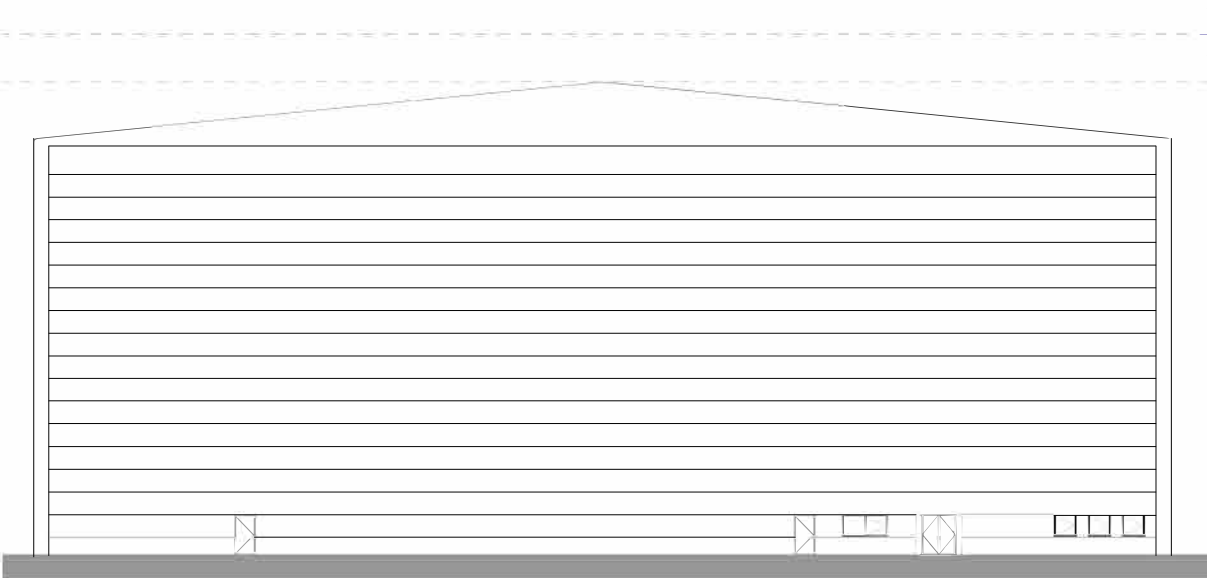
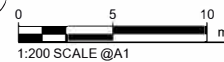
1 South East Elevation



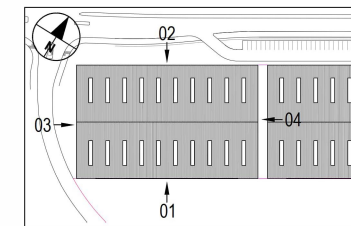
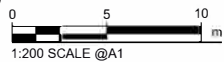
2 North West Elevation



3 South West Elevation

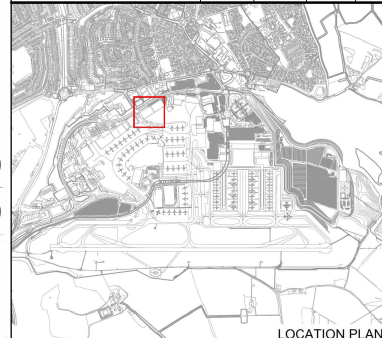


1 North East Elevation



INDICATIVE LAYOUT

DCO Submission	LC	GRM	GU	27-02-23	P01
Revision History	Drawn	Checked	Approved	Date	Rev.

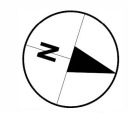


Luton Rising
 Our airport. Our community. Our planet.
 Luton Rising
 Hart House Business Centre
 Kimpston Road, Luton, LU2 0LA
 www.lutonrising.org.uk

**London Luton Airport
 Development Consent Order**

Drawing Title
**INDICATIVE
 HANGAR A & B
 ELEVATIONS**

Purpose of Issue				Suitability	
DCO SUBMISSION				S6	
Drawn	Checked	Approved	Date	Scale	Size
LC	GRM	GU	27-02-23	1:200	A1
DCO Application Ref.		AFPP Regulation	DCO Document Ref.		
TR020001		5(2)(c)	TR020001/APP/4.9		
Drawing Number					Revision
LLADCO-3C-CAP-STR-WRH-DR-AR-1373					P01
Project - Phase - Originator - AssetZone - Sub Asset - Type - Discp - Number					



NOTES

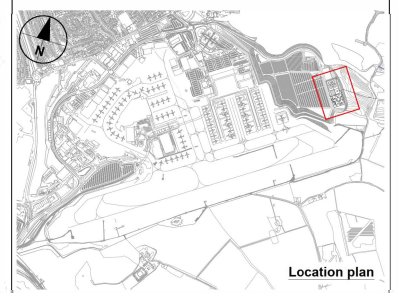
1. All dimensions in metres unless otherwise stated.
2. Exact details concerning configuration and dimensions will be determined and designed at the detailed design stage in line with provisions of the DCO.
3. For wider context, refer to proposed facility no.10 on the Scheme Layout Plans (TR020001/APP/4.02).
4. The fuel storage facility has been designed in accordance with the Storage of Flammable Liquids in Tanks HSG176 Guidance.

KEY

- Proposed pipeline connection
- Fenceline
- Storage tanks bund wall (approx. height: 1.5m, approx. capacity: 6600m³)
- Intermediate bund walls (approx. height of 0.6m)
- Interface tank bund wall (approx. height: 0.9m, approx. capacity: 1100m³)
- Fuel tanks for settling, storage & backup (approx. height: 18m, approx. capacities: 6000m³)
- Fuel interface tank (approx. height: 14m, approx. capacity: 1000m³)
- Area for fuel pumping, piping and valve installations (approx. area: 1360m²)
- 6 no. fuel bowser stands

INDICATIVE LAYOUT

DCO Submission	SW	SR	MS	27-02-23	P01
Revision History	Drawn	Checked	Approved	Date	Rev.

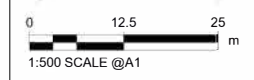
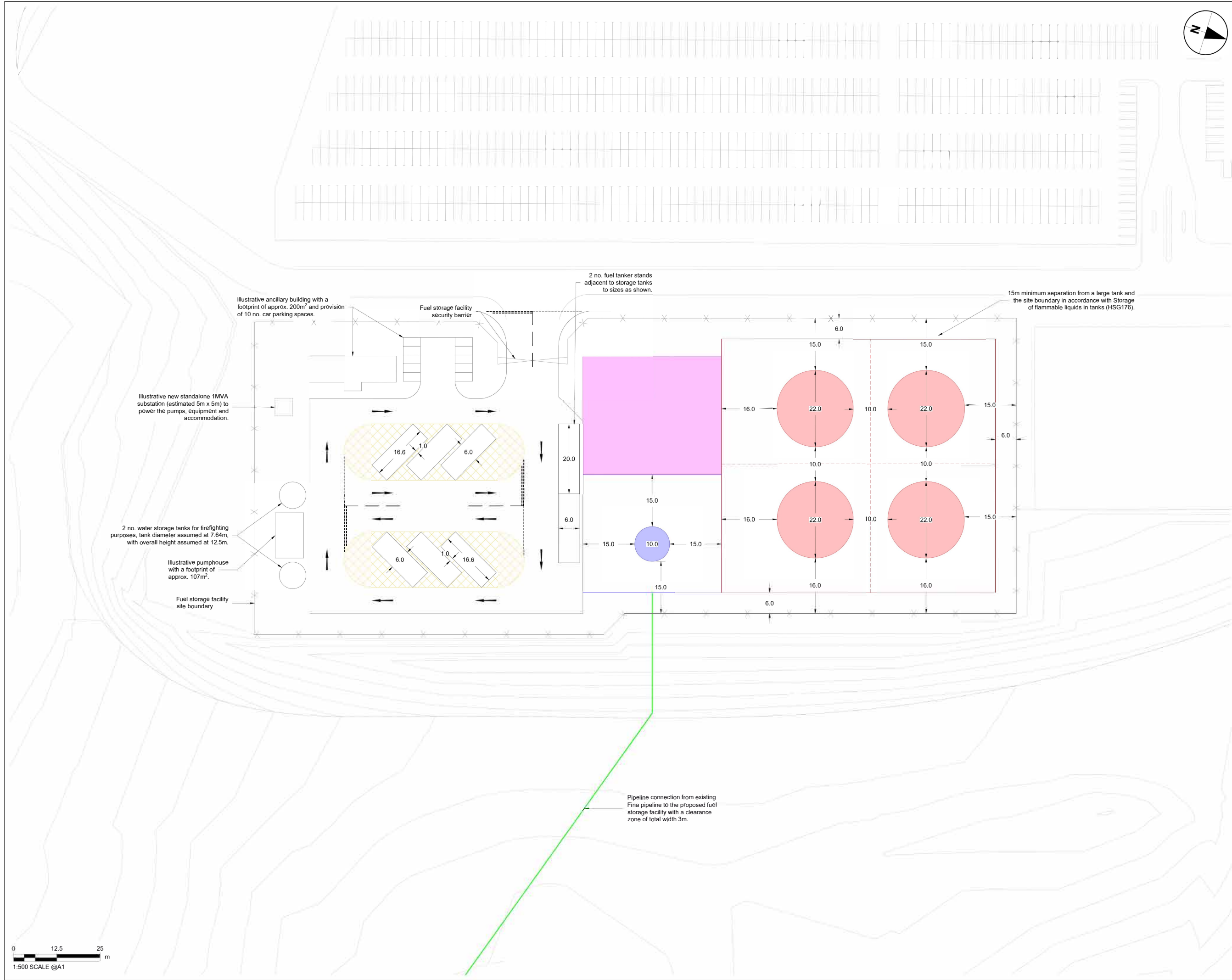


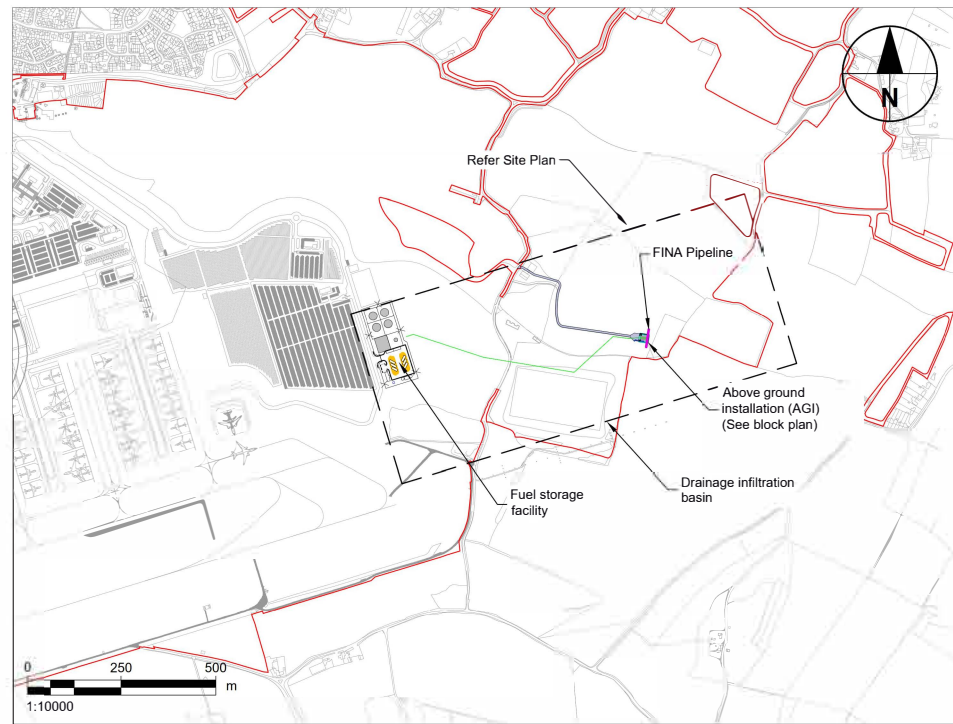
Luton Rising
 Our airport. Our community. Our planet.
 Luton Rising
 Hart House Business Centre
 Kimpton Road, Luton, LU2 0LA
 www.lutonrising.org.uk

London Luton Airport Expansion Development Consent Order

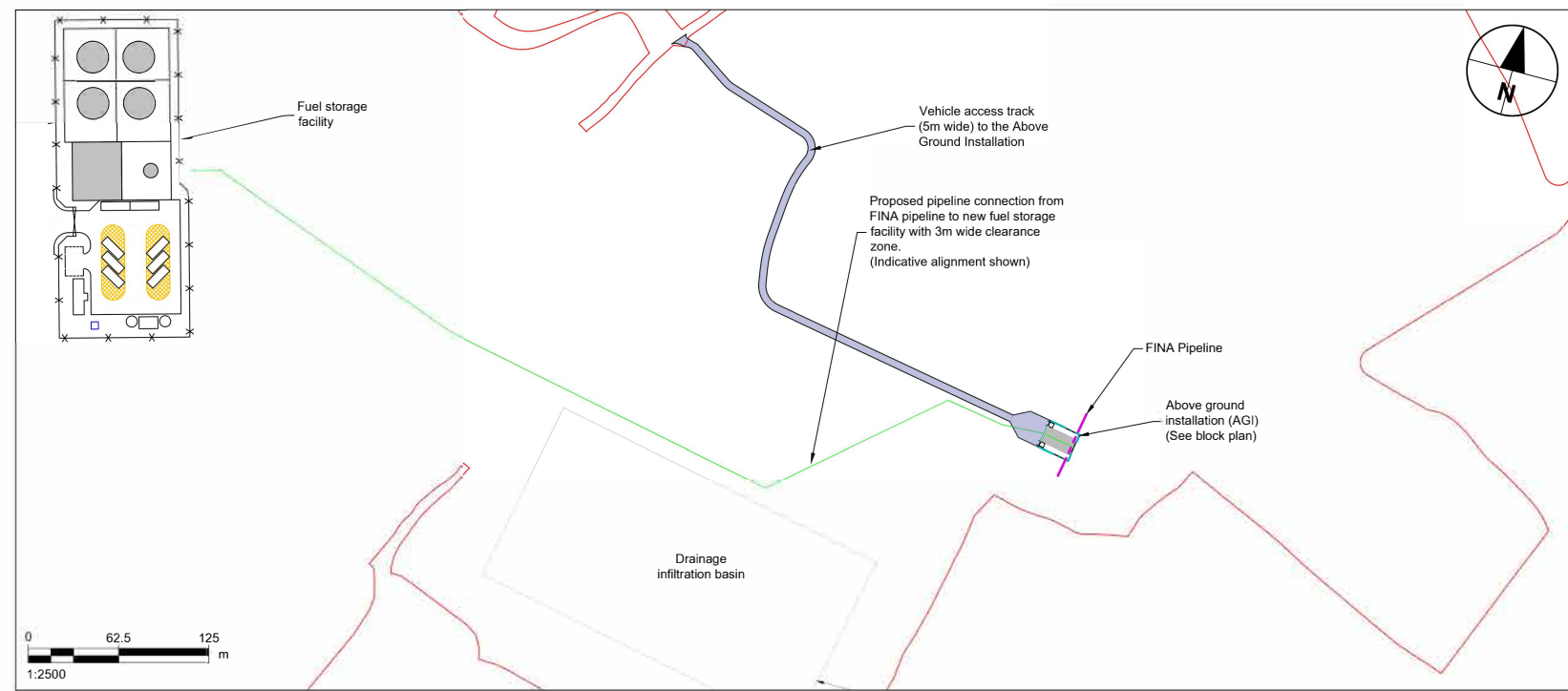
Drawing Title
INDICATIVE LAYOUT FOR FUEL STORAGE FACILITY

Purpose of issue				Suitability	
DCO SUBMISSION				S6	
Drawn	Checked	Approved	Date	Scale	Size
SW	SR	MS	27-02-23	1:500	A1
DCO Application Ref.	APFP Regulation	DCO Document Ref.			
TR020001	5(2)(c)	TR020001/APP/4.9			
Drawing Number					Revision
LLADCO-3C-ACM-AIR-FFA-DR-CE-0002					P01
Project - Phase - Originator - AssetZone - Sub Asset - Type - Desc - Number					

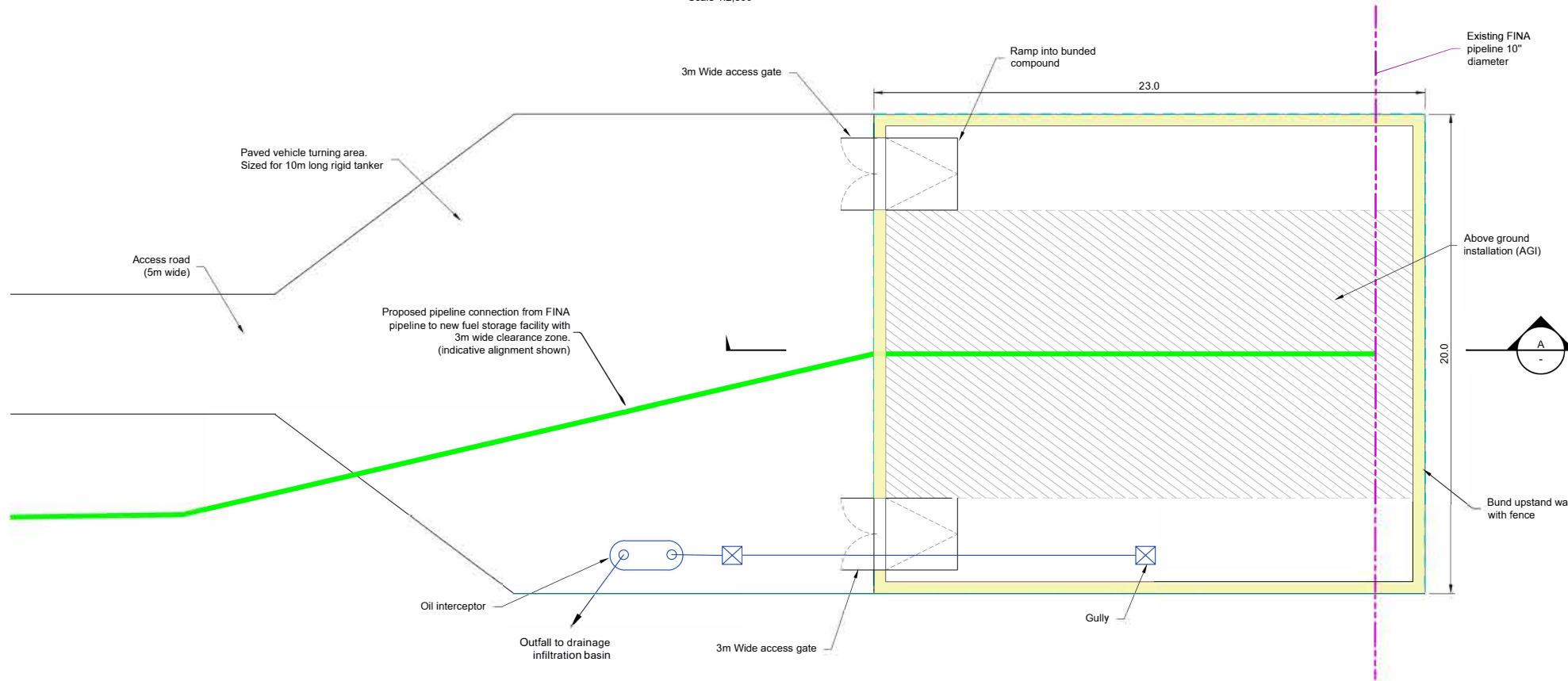




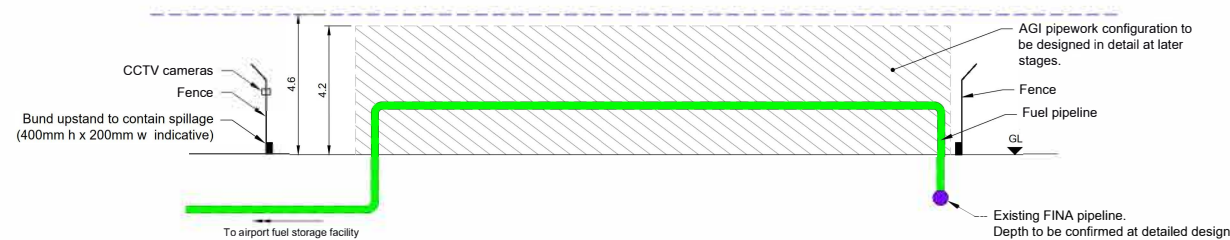
Location Plan
Scale 1:10,000



Site Plan
Scale 1:2,500



Block Plan on Above Ground Installation
Scale 1:125



Section A-A
Scale 1:125

0 3.125 6.25 m
1:125 SCALE @A1

This drawing may contain mapping by permission of Ordnance Survey on behalf of HMSO © Crown Copyright and data base rights 2022 Ordnance Survey 0100031673
All structure positions are indicative. The proposed works will be subject to detailed design development. The changes will be within limits of deviation specified in the Development Consent Order.

NOTES

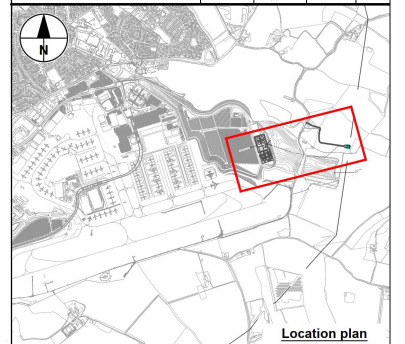
- All dimensions in metres unless otherwise stated.
- This drawing is a preliminary indicative design of the proposed above ground installation (AGI) and can only be used for these purposes. Exact details concerning configuration and dimensions will be determined and designed at the detailed design stage in line with provisions of the DCO.
- For wider context, refer to proposed facility no.11 on the Scheme Layout Plans (TR020001/APP/4.02).
- Pipeline connection alignment from existing FINA pipeline to proposed fuel storage facility is shown indicatively.
- Interceptor design is schematical and subject to detailed design at the detailed design stage in line with provisions of the DCO.
- AGI facility to be secured with a fence which includes anti climb element. It may also require CCTV, detection monitoring and security alarm.

KEY

- Order Limits
- Existing FINA pipeline
- Proposed pipeline connection
- Proposed AGI Access track
- Bund Upstand Wall
- Fence
- Parameter of Above Ground Installation
- Maximum Parameter Height

INDICATIVE LAYOUT

DCO Submission	SW	SR	MS	27-02-23	P01
Revision History	Drawn	Checked	Approved	Date	Rev.



Luton Rising
Our airport. Our community. Our planet.
Luton Rising
Hart House Business Centre
Kimpton Road, Luton, LU2 0LA
www.lutonrising.org.uk

London Luton Airport Expansion Development Consent Order

INDICATIVE GENERAL ARRANGEMENT ABOVE GROUND FUEL INSTALLATION

DCO SUBMISSION				Suitability
Drawn	Checked	Approved	Date	Scale
SW	SR	MS	27-02-23	AS SHOWN
DCO Application Ref.	APFP Regulation	DCO Document Ref.		
TR020001	5(2)(o)	TR020001/APP/4.9		
DCO Submission Ref.	Revision			
LLADCO-3C-ACM-AIR-FFA-DR-CE-0005	P01			

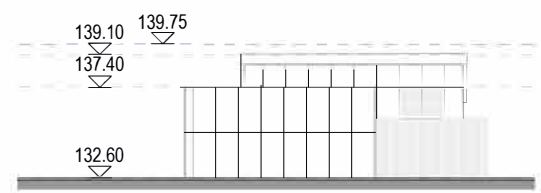
Project - Phase - Originator - AssetZone - Sub Asset - Type - Discp - Number

NOTES

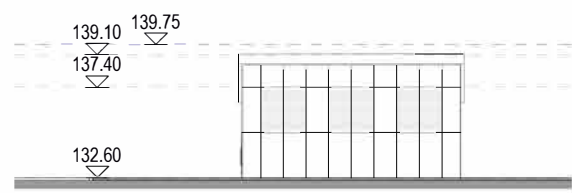
1. This drawing is an indicative layout and can only be used for information purposes.
2. Exact details concerning configuration and dimensions will be determined and designed at the detailed design stage in line with provisions of the DCO.
3. Parameter heights are shown in metres - above ordnance datum (AOD).
4. For wider context, refer to proposed facility no.17 on the Scheme Layout Plans (TR020001/APP/4.02).

KEY

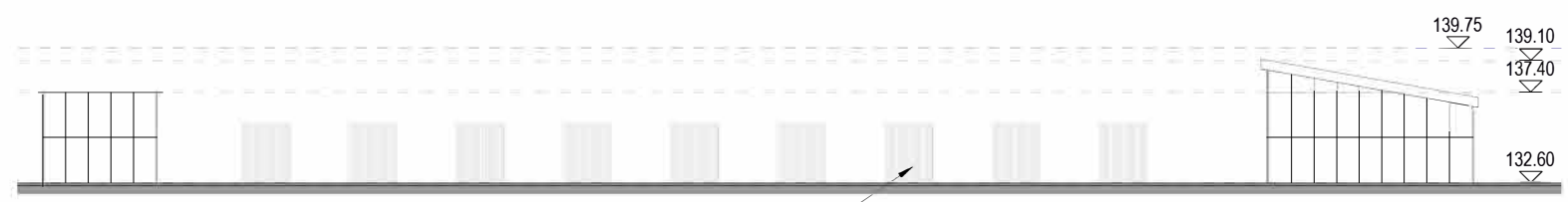
- 177.00 Parameter height (AOD)
- Parameter height lines
- - - Maximum Parameter height lines



1 North - All
 0 5 10 m
 1:200 SCALE @A1



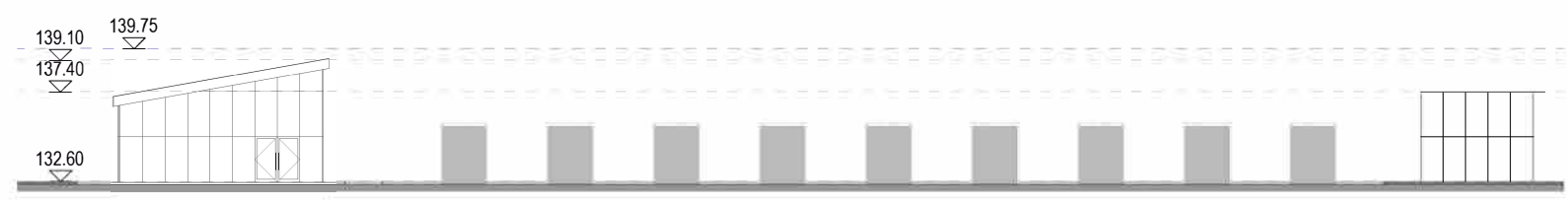
2 North - Building Only
 0 5 10 m
 1:200 SCALE @A1



3 West
 0 5 10 m
 1:200 SCALE @A1



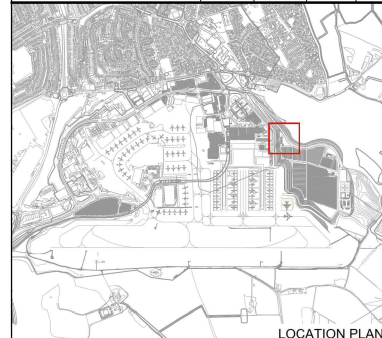
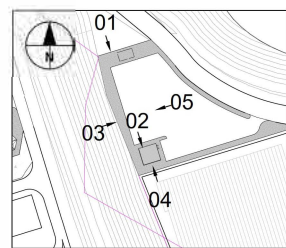
4 South
 0 5 10 m
 1:200 SCALE @A1



5 East
 0 5 10 m
 1:200 SCALE @A1

INDICATIVE LAYOUT

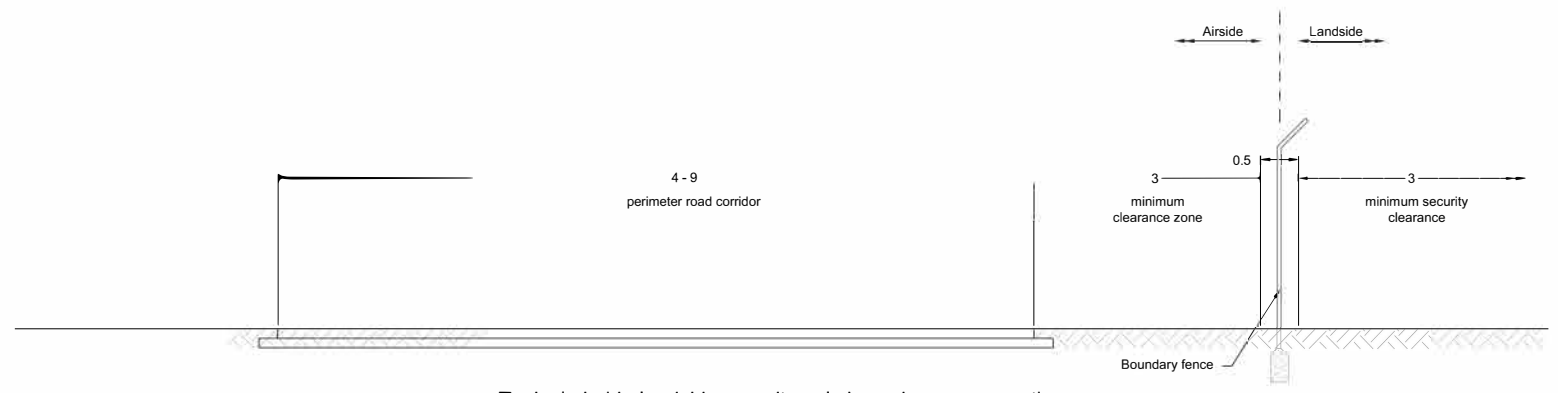
DCO Submission	LC	GRM	GU	27-02-23	P01
Revision History	Drawn	Checked	Approved	Date	Rev.



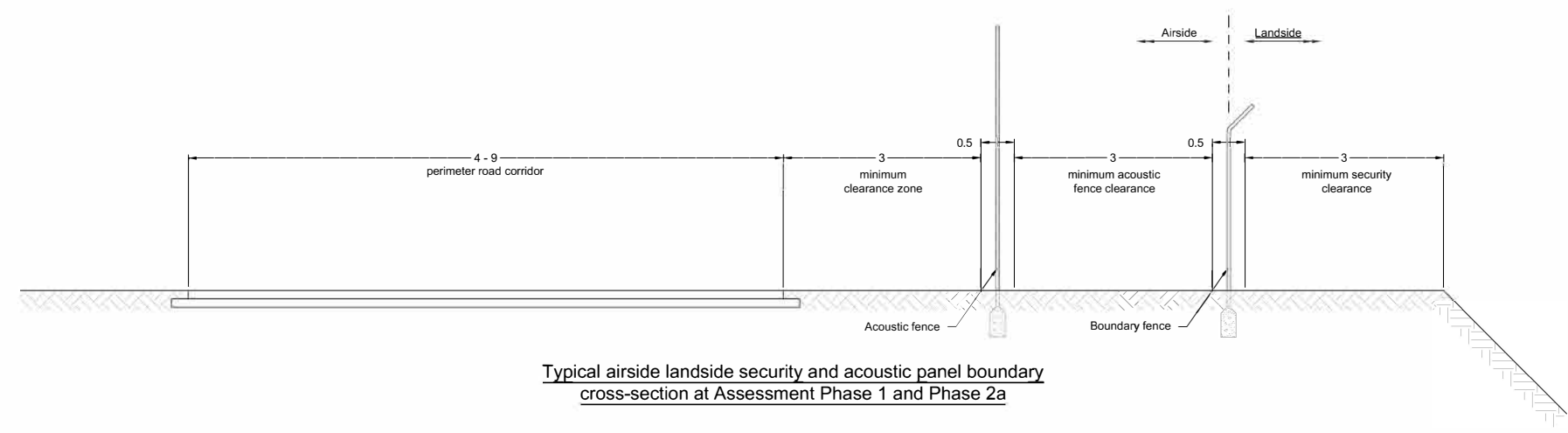
London Luton Airport Development Consent Order

Drawing Title
INDICATIVE SOLAR BATTERY STORAGE ELEVATIONS

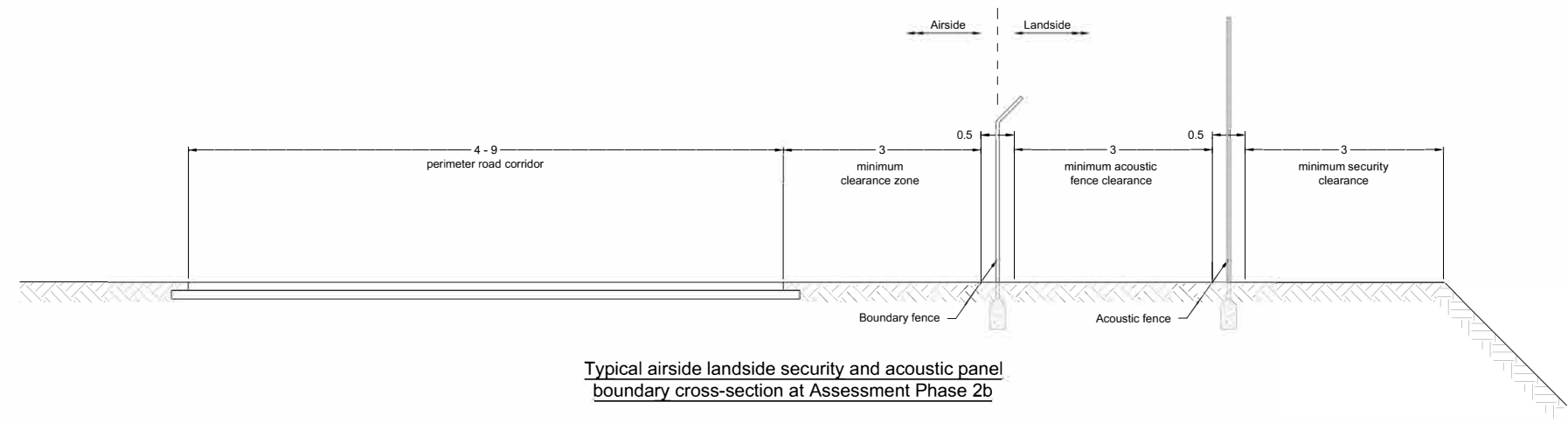
Purpose of issue				Suitability		
DCO SUBMISSION				S6		
Drawn	Checked	Approved	Date	Scale	Size	
LC	GRM	GU	27-02-23	1:200	A1	
DCO Application Ref.		APFP Regulation		DCO Document Ref.		
TR020001		5(2)(o)		TR020001/APP/4.9		
Drawing Number						Revision
LLADCO-3C-CAP-STR-WRH-DR-AR-1393						P01
Project - Phase - Originator - AssetZone - Sub Asset - Type - Discp - Number						



Typical airside landside security only boundary cross-section



Typical airside landside security and acoustic panel boundary cross-section at Assessment Phase 1 and Phase 2a



Typical airside landside security and acoustic panel boundary cross-section at Assessment Phase 2b

- NOTES**
1. All dimensions are in metres unless otherwise stated.
 2. Exact details concerning configuration and dimensions will be determined and designed at the detailed design stage in line with provisions of the DCO.
 3. For wider context, refer to the Scheme Layout Plans (TR020001/APP/4.02).
 4. The existing airside perimeter fence line will be retained where not impacted by the development. Proposed airside perimeter fencing will be installed as required by the development to maintain a continuous airside perimeter boundary.
 5. For fencing layout refer to drawings LLADCO-3C-ACM-AIR-FEN-DR-CE-0001, 0002 and 0006 for Phase 2b, 2a and 1 respectively.
 6. The proposed boundary fence would also include security sensors and required network. Exact detail and location would be determined at a Detailed Design stage in line with provisions of the DCO.
 7. Acoustic fence assumed to be 4m high similar to current acoustic fence at London Luton Airport along President Way.

INDICATIVE LAYOUT

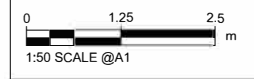
DCO Submission	SW	SR	MS	27-02-23	P01
Revision History	Drawn	Checked	Approved	Date	Rev.



**London Luton Airport Expansion
Development Consent Order**

Drawing Title
**INDICATIVE
AIRSIDE-LANDSIDE
BOUNDARY SECTIONS**

Purpose of Issue				Suitability	
DCO SUBMISSION				S6	
Drawn	Checked	Approved	Date	Scale	Size
SW	SR	MS	27-02-23	1:50	A1
DCO Application Ref	APP/Regulation	DCO Document Ref			
TR020001	5(2)(o)	TR020001/APP/4.9			
Drawing Number					Revision
LLADCO-3C-ACM-AIR-FEN-DR-CE-0005					P01
Project - Phase - Originator - AssetZone - Sub Asset - Type - Discp. - Number					



This drawing may contain mapping by permission of Ordnance Survey on behalf of HMSO © Crown Copyright and database right 2022 Ordnance Survey 100031673. All structure positions are indicative. The proposed works will be subject to detailed design development. The changes will be within limits of deviation specified in the Development Consent Order.

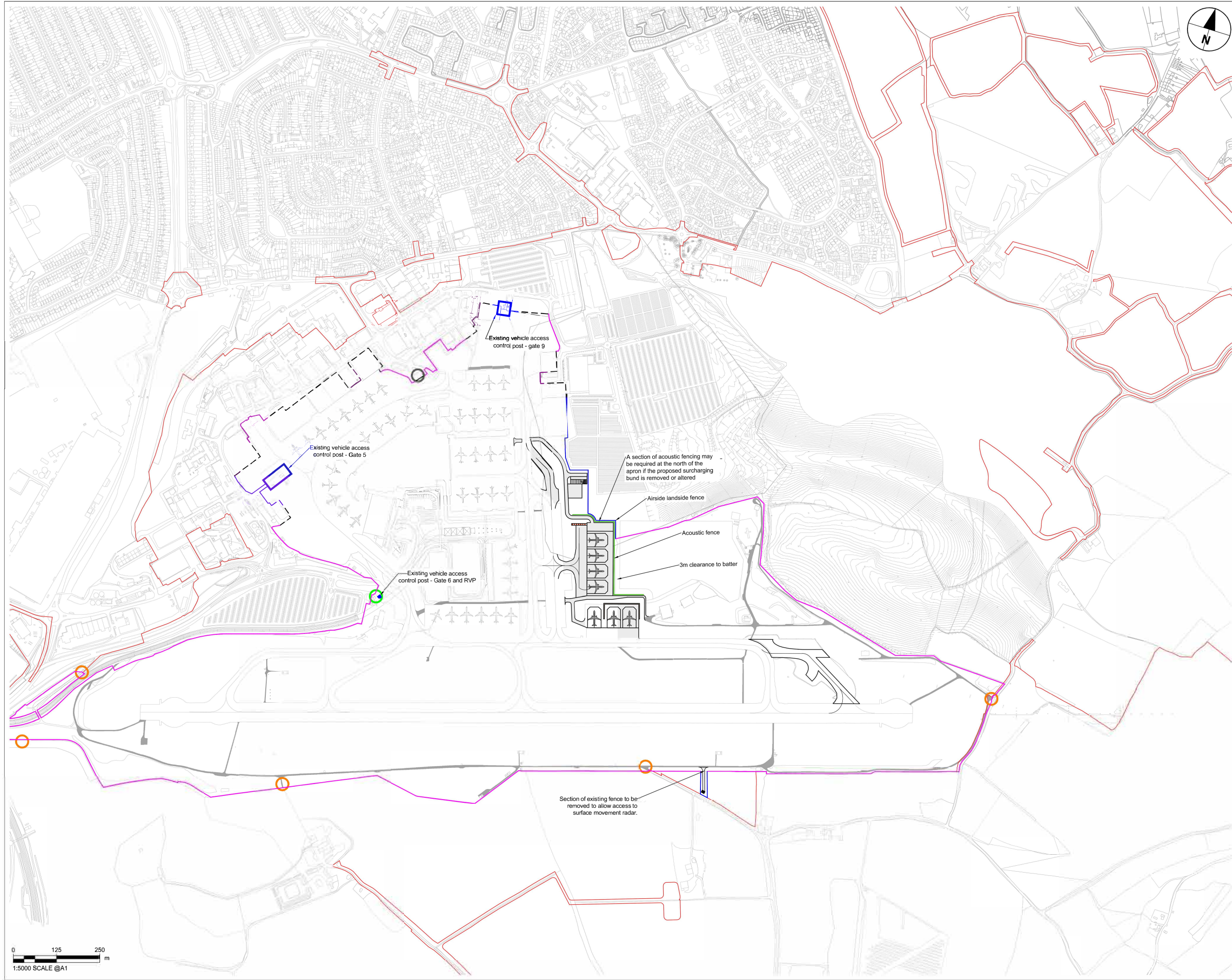


NOTES

- Exact details concerning configuration and dimensions will be determined and designed at the detailed design stage in line with provisions of the DCO.
- For wider context, refer to the Scheme Layout Plans (TR020001/APP/4.02).
- The existing airside perimeter fence will be retained where not impacted by the development. Proposed airside perimeter fencing will be installed as required by the development to maintain a continuous airside perimeter boundary.
- For perimeter fences typical details refer to drawing LLADCO-3C-ACM-AIR-FEN-DR-CE-0005.

KEY

- Order Limits
- Existing airside perimeter fence
- Proposed airside perimeter fence
- Proposed acoustic fence
- - - Airside - landside boundary within buildings
- Existing vehicle access control posts
- Existing rendezvous point (RVP)
- Existing internal airport access roads gates
- Existing emergency crash gates
- - - - - Proposed blast fence



INDICATIVE LAYOUT

DCO Submission	SW	SR	MS	27-02-23	P01
Revision History	Drawn	Checked	Approved	Date	Rev.



Luton Rising
 Luton Rising
 Hart House Business Centre
 Kimpston Road, Luton, LU2 0LA
 www.lutonrising.org.uk

Our airport. Our community. Our planet.

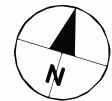
**London Luton Airport Expansion
 Development Consent Order**

Drawing Title
**INDICATIVE GENERAL
 ARRANGEMENT
 AIRFIELD FENCING
 ASSESSMENT PHASE 1**

Purpose of issue				DCO SUBMISSION		Suitability
Drawn	Checked	Approved	Date	Scale	Size	S6
SW	SR	MS	27-02-23	1:5000	A1	
DCO Application Ref	APFP Regulation	DCO Document Ref				
TR020001	5(2)(c)	TR020001/APP/4.9				
Drawing Number						Revision
LLADCO-3C-ACM-AIR-FEN-DR-CE-0006						P01
Project - Phase - Originator - AssetZone - Sub Asset - Type - Disc - Number						



This drawing may contain mapping by permission of Ordnance Survey on behalf of HMSO © Crown Copyright and database right 1:2022 Ordnance Survey 0100031673. All structure positions are indicative. The proposed works will be subject to detailed design development. The changes will be within limits of deviations specified in the Development Consent Order.

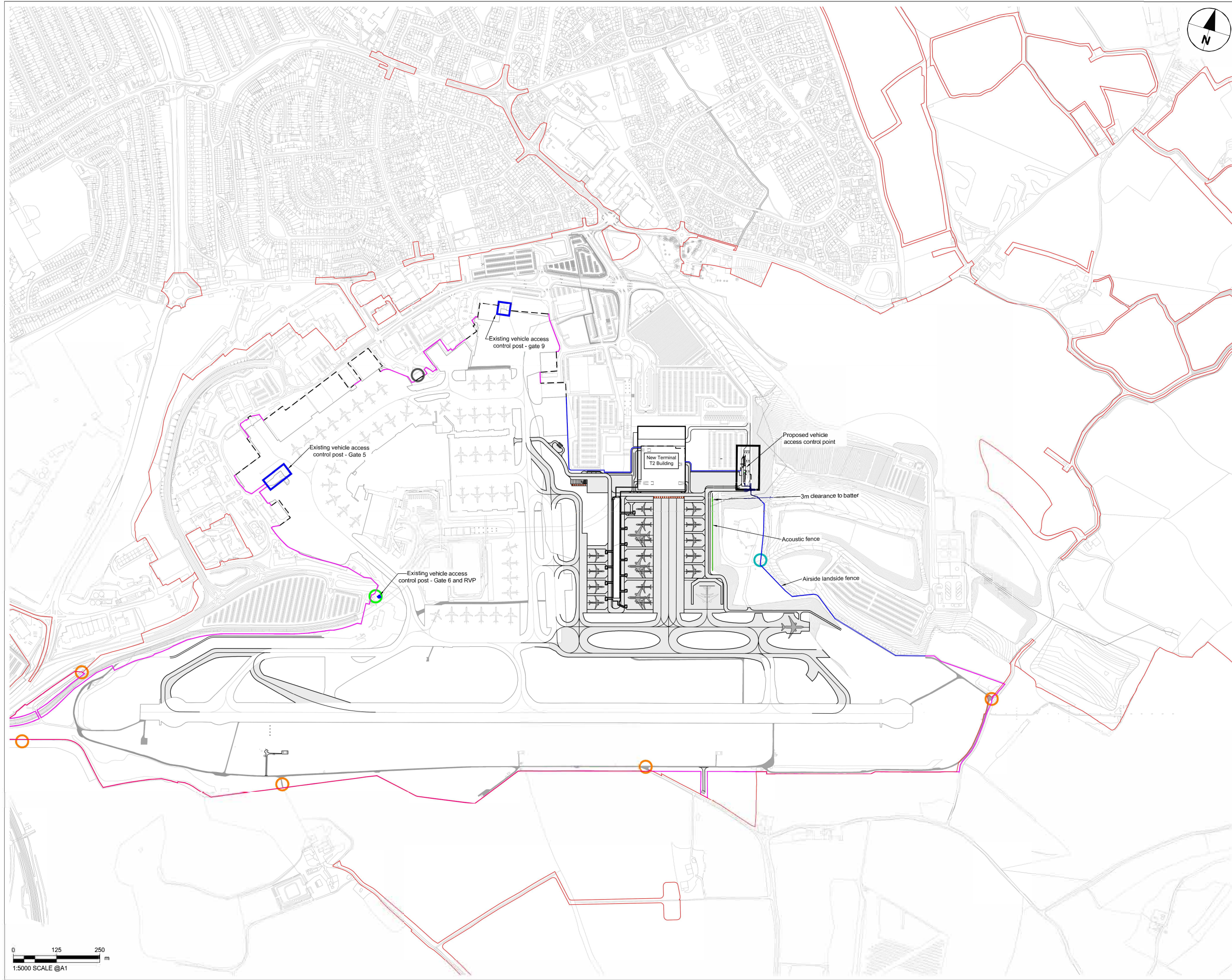


NOTES

1. Exact details concerning configuration and dimensions will be determined and designed at the detailed design stage in line with provisions of the DCO.
2. For wider context, refer to the Scheme Layout Plans (TR020001/APP/4.02).
3. The existing airside perimeter fence will be retained where not impacted by the development. Proposed airside perimeter fencing will be installed as required by the development to maintain a continuous airside perimeter boundary.
4. For perimeter fences typical details refer to drawing LLADCO-3C-ACM-AIR-FEN-DR-CE-0005.

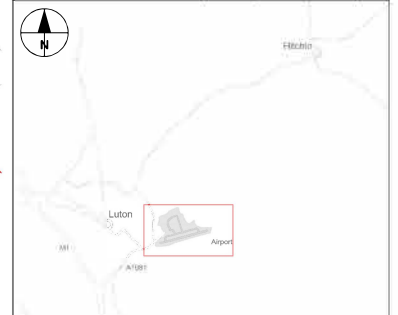
KEY

- Order Limits
- Existing airside perimeter fence
- Proposed airside perimeter fence
- Proposed acoustic fence
- - - - - Airside - landside boundary within buildings
- Proposed vehicle access control points
- Existing vehicle access control posts
- Existing rendezvous point (RVP)
- Existing internal airport access roads gates
- Existing emergency crash gates
- Proposed emergency crash gates
- - - - - Proposed blast fence

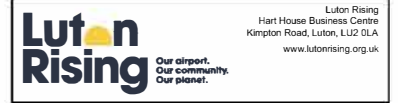


INDICATIVE LAYOUT

DCO Submission	SW	SR	MS	27-02-23	P01
Revision History	Drawn	Checked	Approved	Date	Rev.



Location plan



London Luton Airport Expansion Development Consent Order

Drawing Title
INDICATIVE GENERAL ARRANGEMENT AIRFIELD FENCING ASSESSMENT PHASE 2A

Purpose of Issue				DCO SUBMISSION		Suitability	
						S6	
Drawn	Checked	Approved	Date	Scale	Size		
SW	SR	MS	27-02-23	1:5000	A1		
DCO Application Ref		APPP Regulation		DCO Document Ref.			
TR020001		5(2)(c)		TR020001/APP/4.9			
Drawing Number						Revision	
LLADCO-3C-ACM-AIR-FEN-DR-CE-0002						P01	
Project - Phase - Originator - AssetZone - Sub Asset - Type - Disc. - Number							



This drawing may contain mapping by permission of Ordnance Survey on behalf of HMSO © Crown Copyright and database rights 2022 Ordnance Survey 0100031673
 All structure positions are indicative. The proposed works will be subject to detailed design development. The changes will be within limits of deviation specified in the Development Consent Order.

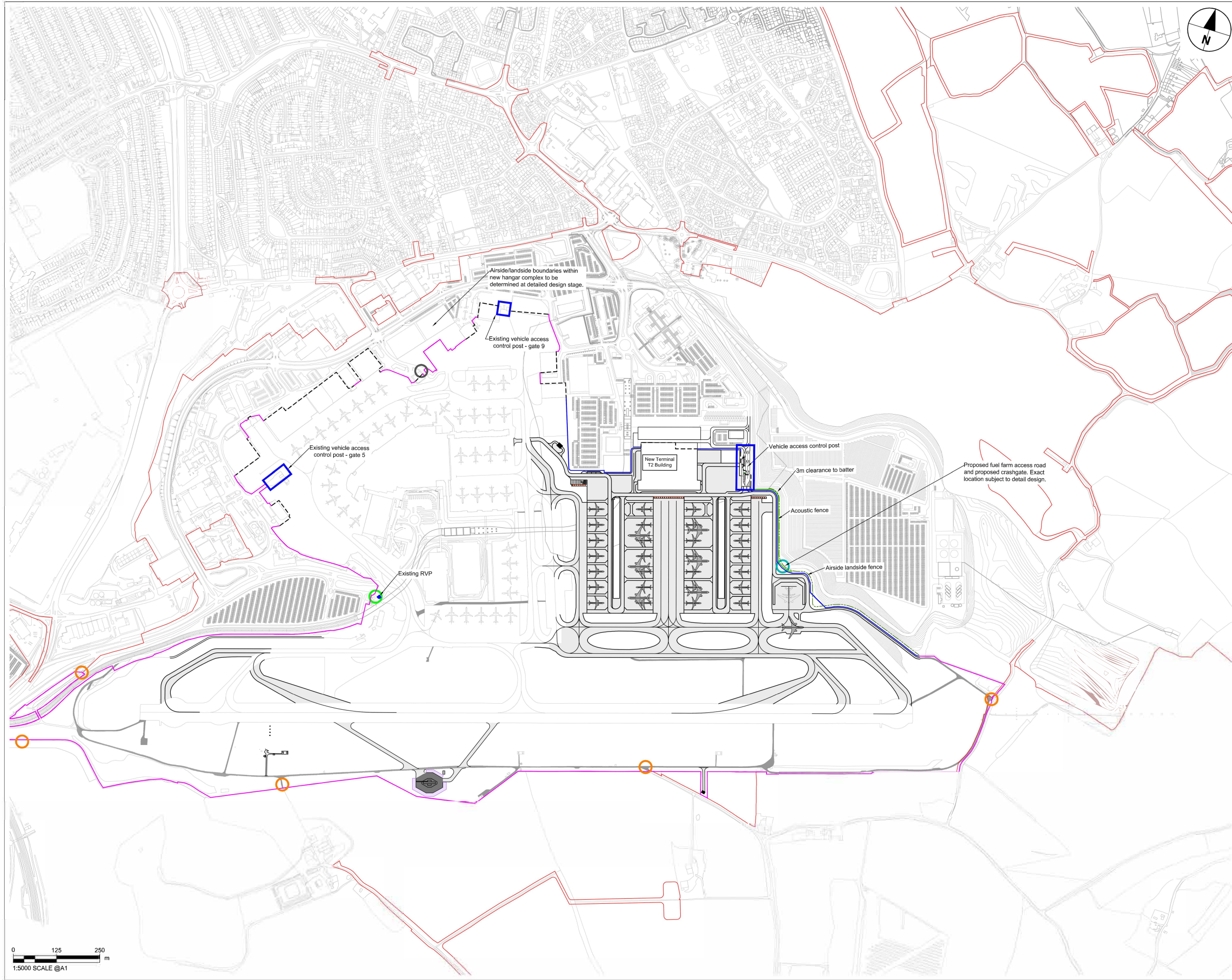


NOTES

- Exact details concerning configuration and dimensions will be determined and designed at the detailed design stage in line with provisions of the DCO.
- For wider context, refer to the Scheme Layout Plans (TR020001/APP/4.02).
- The existing airside perimeter fence will be retained where not impacted by the development. Proposed airside perimeter fencing will be installed as required by the development to maintain a continuous airside perimeter boundary.
- For perimeter fences typical details refer to drawing LLADCO-3C-ACM-AIR-FEN-DR-CE-0005.

KEY

- Order Limits
- Existing airside perimeter fence
- Proposed airside perimeter fence (6m wide zone)
- Proposed acoustic fence
- - - - - Airside - landside boundary within buildings
- Existing vehicle access control posts
- Existing rendezvous point (RVP)
- Existing internal airport access roads gates
- Existing emergency crash gates
- Proposed emergency crash gates
- - - - - Proposed blast fence



INDICATIVE LAYOUT

DCO Submission	SW	SR	MS	27-02-23	P01
Revision History	Drawn	Checked	Approved	Date	Rev.



Location plan

Luton Rising
Hart House Business Centre
Kimpton Road, Luton, LU2 0LA
www.lutonrising.org.uk

Luton Rising

Our airport.
Our community.
Our planet.

**London Luton Airport Expansion
Development Consent Order**

Drawing Title
**INDICATIVE
AIRFIELD FENCING LAYOUT
ASSESSMENT PHASE 2B**

Purpose of Issue				Suitability	
DCO SUBMISSION				S6	
Drawn	Checked	Approved	Date	Scale	Site
SW	SR	MS	27-02-23	1:5000	A1
DCO Application Ref.	APFP Regulation	DCO Document Ref.			
TR020001	5(2)(a)	TR020001/APP/4.9			
Drawing Number					Revision
LLADCO-3C-ACM-AIR-FEN-DR-CE-0001					P01
Project - Phase - Originator - AssetZone - Sub Asset - Type - Discp. - Number					



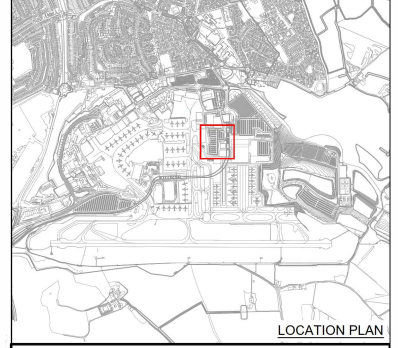
This drawing may contain mapping by permission of Ordnance Survey on behalf of HMSO © Crown Copyright and data base rights 2022 Ordnance Survey 0100031673
 All structure positions are indicative. The proposed works will be subject to detailed design development. The changes will be within limits of deviation specified in the Development Consent Order.

- NOTES**
1. This drawing is an indicative layout and can only be used for information purposes.
 2. Exact details concerning configuration and dimensions will be determined and designed at the detailed design stage in line with provisions of the DCO.
 3. Parameter heights are shown in metres - above ordnance datum (AOD).
 4. For wider context, refer to proposed facility P5 on the Scheme Layout Plans (TR020001/APP/4.02).

- KEY**
- 177.00 Parameter height (AOD)
 - Parameter height lines
 - Maximum Parameter height lines

INDICATIVE LAYOUT

DCO Submission	LC	GRM	GU	27-02-23	P01
Revision History	Drawn	Checked	Approved	Date	Rev.



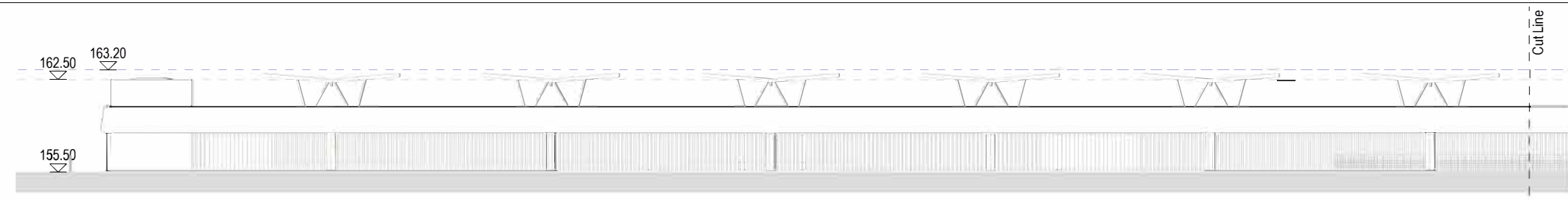
Luton Rising
 Luton Rising
 Hart House Business Centre
 Kimpton Road, Luton, LU2 0LA
 www.lutonrising.org.uk
 Our airport. Our community. Our planet.

**London Luton Airport
 Development Consent Order**

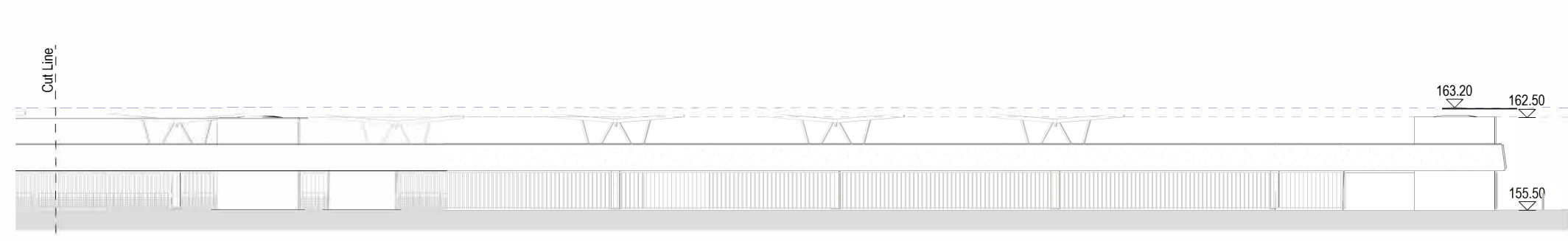
Drawing Title
**INDICATIVE
 DECK & SURFACE CARPARK
 ELEVATIONS**

Purpose of Issue				Suitability	
DCO SUBMISSION				S6	
Drawn	Checked	Approved	Date	Scale	Size
LC	GRM	GU	27-02-23	1:200	A1
DCO Application Ref.		APFP Regulation		DCO Document Ref.	
TR020001		5(2)(o)		TR020001/APP/4.9	
Drawing Number					Revision
LLADCO-3C-CAP-STR-PRK-DR-AR-1413					P01
Project - Phase - Originator - AssetZone - Sub Asset - Type - Discp. - Number					

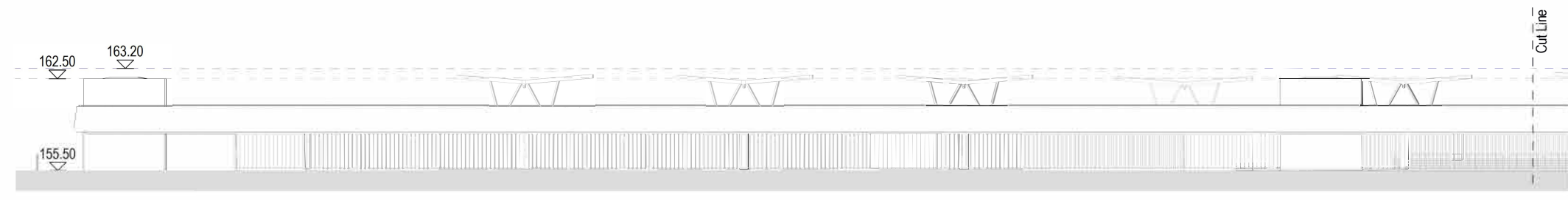
1 East Elevation (part 1)
 0 5 10 m
 1:200 SCALE @A1



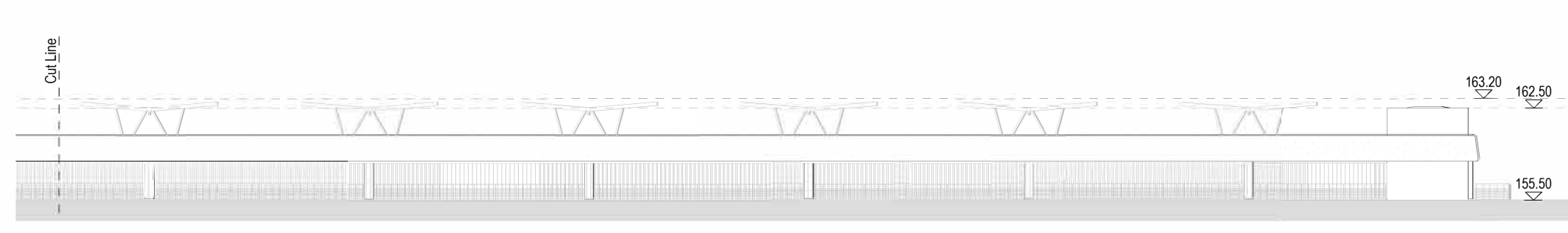
1 East Elevation (part 2)
 0 5 10 m
 1:200 SCALE @A1



2 West Elevation (part 1)
 0 5 10 m
 1:200 SCALE @A1



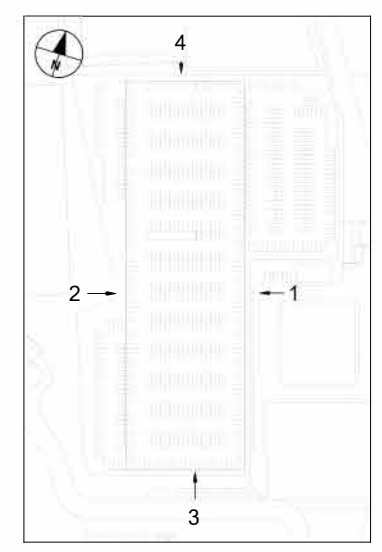
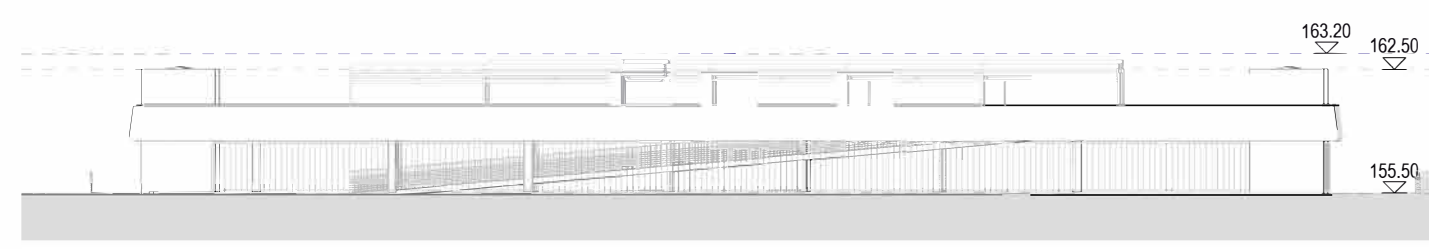
2 West Elevation (part 2)
 0 5 10 m
 1:200 SCALE @A1



3 South Elevation
 0 5 10 m
 1:200 SCALE @A1



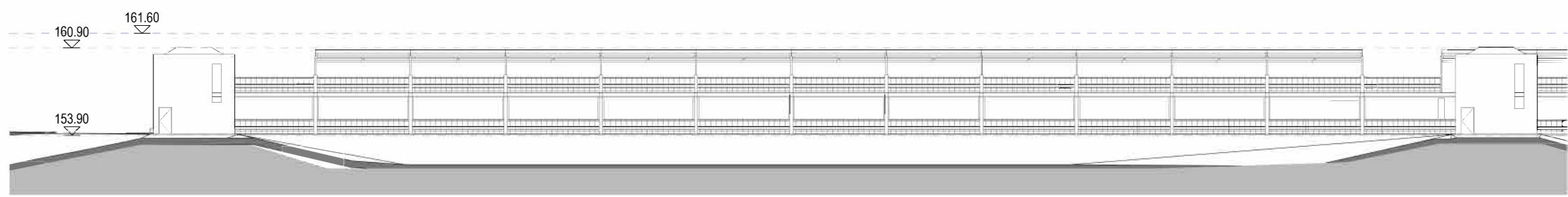
4 North Elevation
 0 5 10 m
 1:200 SCALE @A1



This drawing may contain mapping by permission of Ordnance Survey on behalf of HMSO. Crown Copyright and database rights 2022. Ordnance Survey 010031673. All structure positions are indicative. The proposed works will be subject to detailed design development. The changes will be within limits of deviation specified in the Development Consent Order.

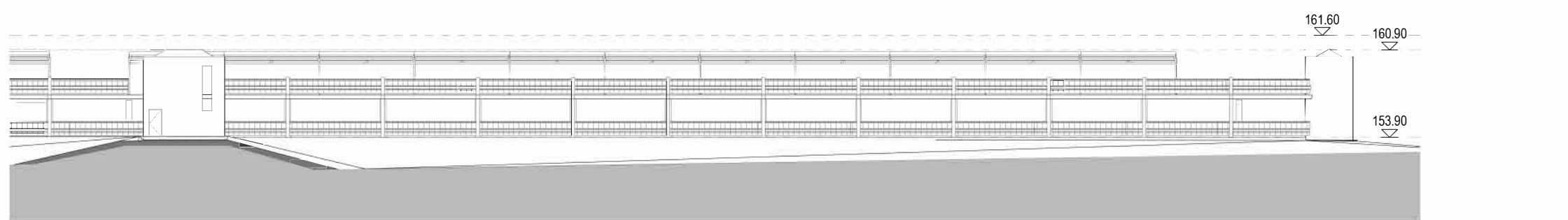
- NOTES**
1. This drawing is an indicative layout and can only be used for information purposes.
 2. Exact details concerning configuration and dimensions will be determined and designed at the detailed design stage in line with provisions of the DCO.
 3. Parameter heights are shown in metres - above ordnance datum (AOD).
 4. For wider context, refer to proposed facility P9 on the Scheme Layout Plans (TR020001/APP/4.02).

- KEY**
- 177.00 Parameter height (AOD)
 - Parameter height lines
 - - - Maximum Parameter height lines



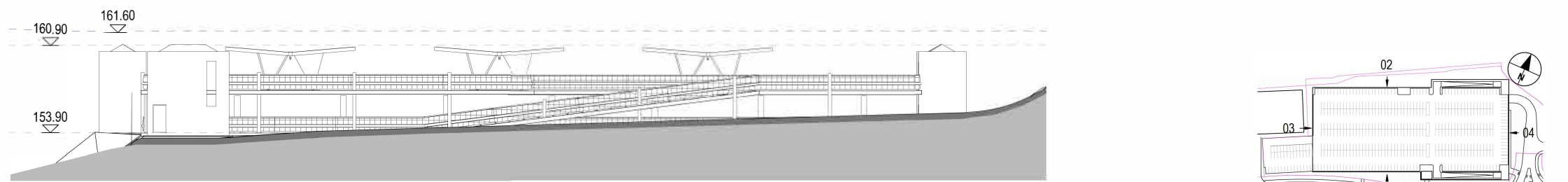
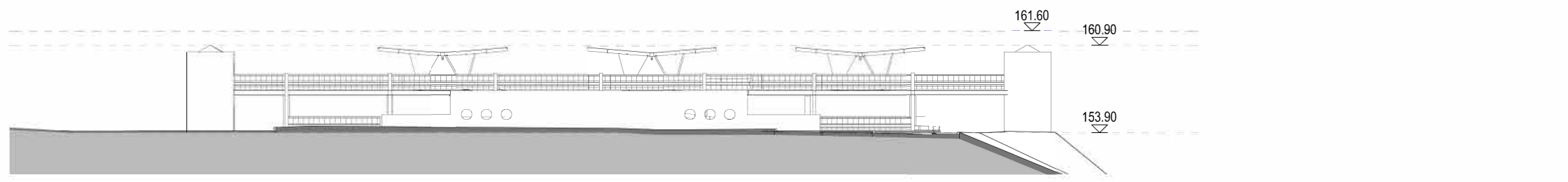
1 Elevation - North West

0 5 10 m
1:200 SCALE @A1



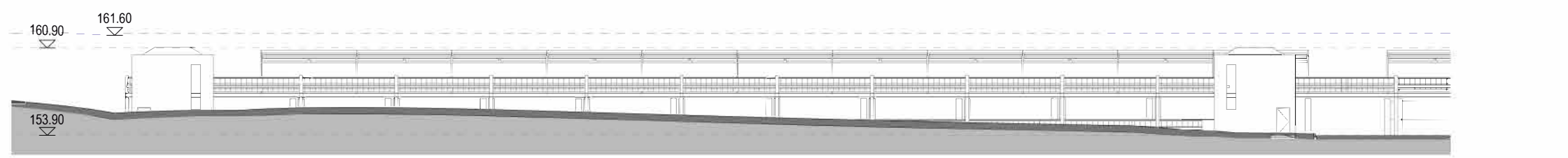
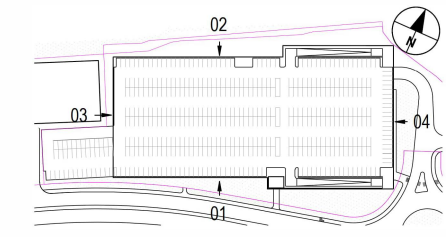
2 Elevation - North East

0 5 10 m
1:200 SCALE @A1



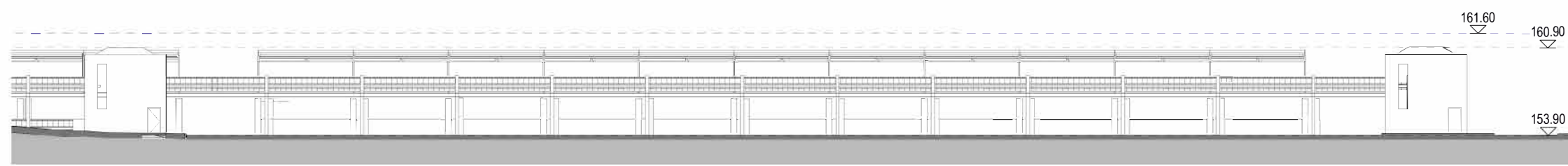
3 Elevation - South West

0 5 10 m
1:200 SCALE @A1



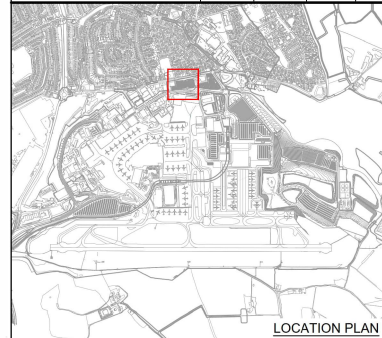
4 Elevation - South East

0 5 10 m
1:200 SCALE @A1



INDICATIVE LAYOUT

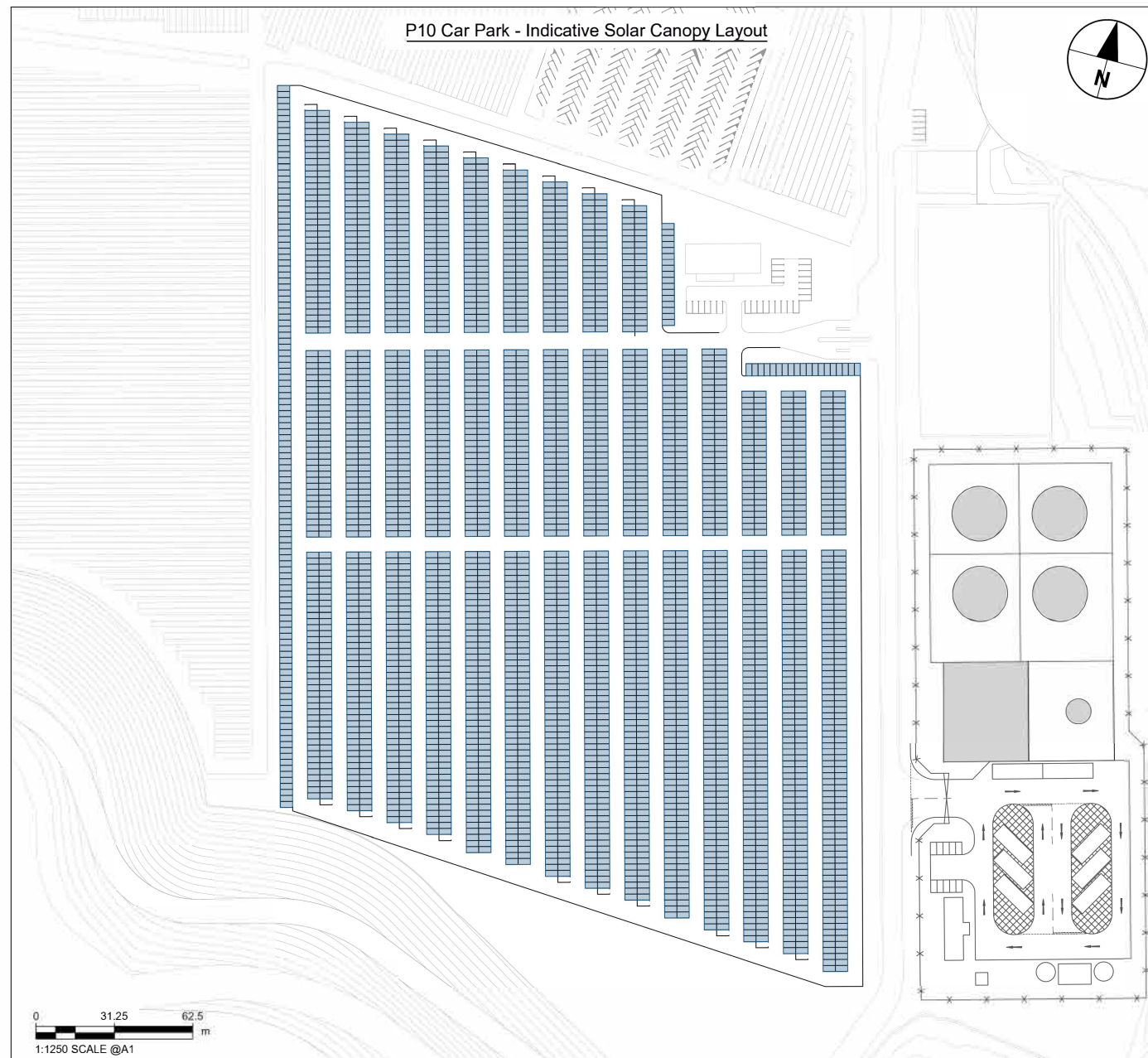
DCO Submission	LC	GRM	GU	27-02-23	P01
Revision History	Drawn	Checked	Approved	Date	Rev.



London Luton Airport Development Consent Order

Drawing Title
INDICATIVE DECK & SURFACE PARKING ELEVATIONS

Purpose of issue				Suitability		
DCO SUBMISSION				S6		
Drawn	Checked	Approved	Date	Scale	Size	
LC	GRM	GU	27-02-23	1:200	A1	
DCO Application Ref.		APEP Regulation		DCO Document Ref.		
TR020001		5(2)(o)		TR020001/APP/4.9		
Drawing Number						
LLADCO-3C-CAP-STR-PRK-DR-AR-1313						
Revision					P01	
Project - Phase - Originator - AssetZone - Sub Asset - Type - Discp - Number						



NOTES

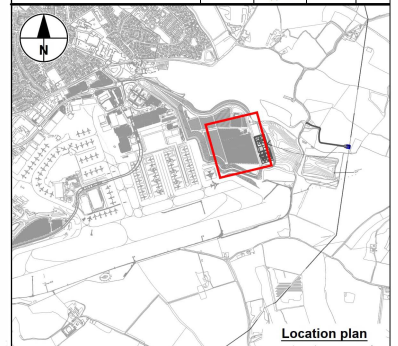
1. This drawing is an indicative layout and can only be used for information purposes.
2. Exact details concerning configuration and dimensions will be determined and designed at the detailed design stage in line with provisions of the DCO (including column and inverter configuration).
3. All dimensions are in metres unless otherwise stated.
4. For wider context, refer to proposed facility P10 on the Scheme Layout Plans (TR020001/APP/4.02).
5. A glint and glare assessment will be required at detailed design stage.

KEY

- Proposed PV Panels
- Indicative Car Parking Spaces

INDICATIVE LAYOUT

DCO Submission	SW	SR	MS	27-02-23	P01
Revision History	Drawn	Checked	MS	Date	Rev.



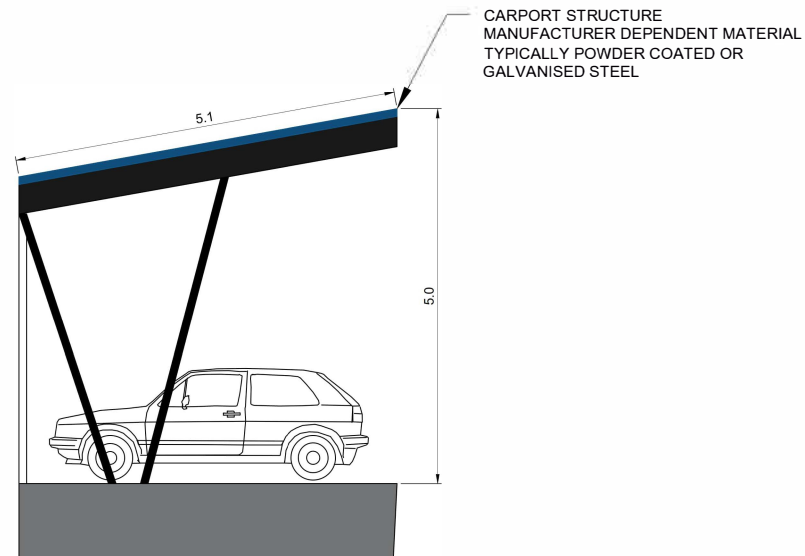
Luton Rising
 Luton Rising
 Hart House Business Centre
 Kimpton Road, Luton, LU2 0LA
 www.lutonrising.org.uk
 Our airport. Our community. Our planet.

**London Luton Airport
 Development Consent Order**

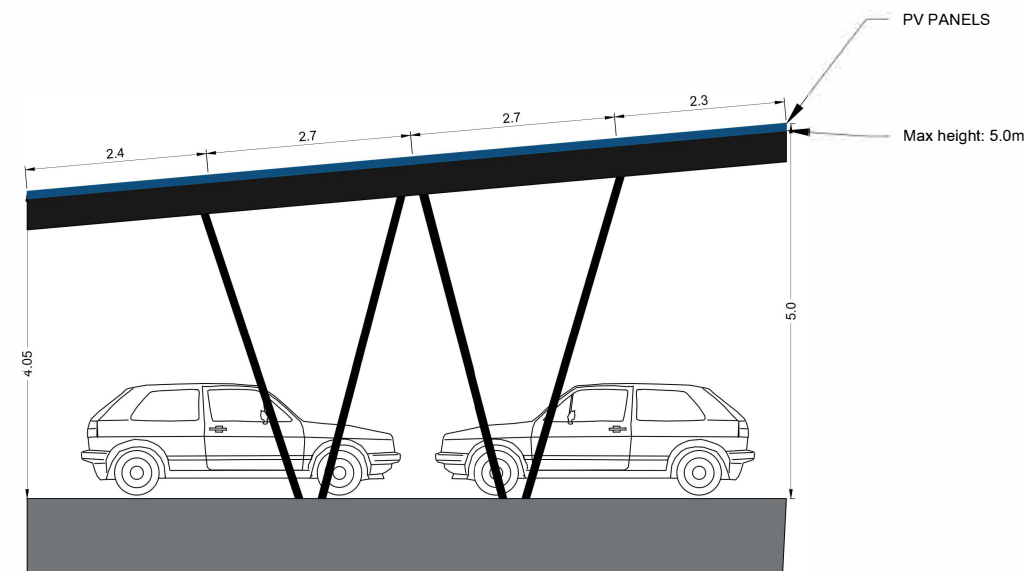
Drawing Title
**INDICATIVE GENERAL
 ARRANGEMENT
 SOLAR CAR PORT**

Purpose of issue				DCO SUBMISSION		Suitability	
Drawn	Checked	Approved	Date	Scale	Size		
SW	SR	MS	27-02-23	AS SHOWN	A1		
DCO Application Ref.	APPF Regulation	DCO Document Ref.					
TR020001	5(2)(c)	TR020001/APP/4.9					
Drawing Number						Revision	
LLADCO-3C-ACM-INF-MS-DR-AR-0001						P01	
Project - Phase - Originator - AssetZone - Sub Asset - Type - Desc - Number							

V-FRAME SINGLE ROW MONOPITCH SOLAR CARPORT



V-FRAME DOUBLE ROW MONOPITCH SOLAR CARPORT

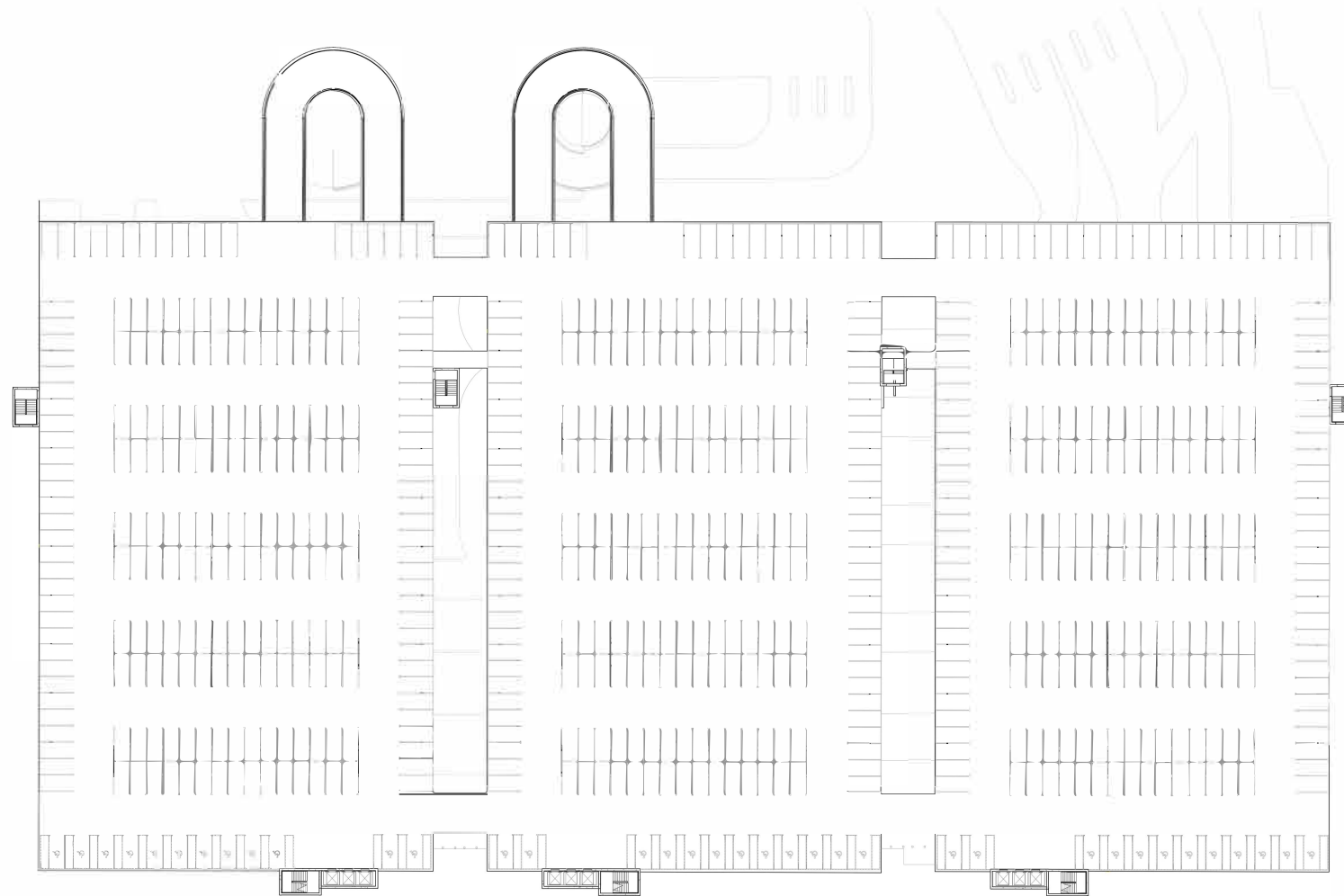




This drawing may contain mapping by permission of Ordnance Survey on behalf of HM/SO © Crown Copyright and database rights 2022 Ordnance Survey 100031673
 All structure positions are indicative. The proposed works will be subject to detailed design development. The changes will be within limits of deviation specified in the Development Consent Order.

NOTES

1. This drawing is an indicative layout and can only be used for information purposes.
2. Exact details concerning configuration and dimensions will be determined and designed at the detailed design stage in line with provisions of the DCO.
3. For wider context, refer to proposed facility P12 on the Scheme Layout Plans (TR020001/APP/4.02).

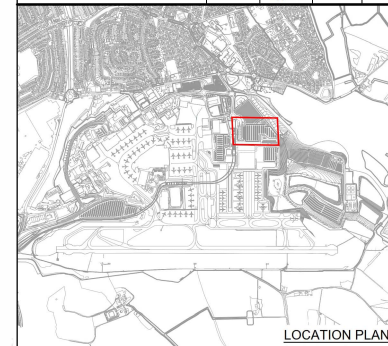


1 Typical Floor Plan - Multistorey Car Park



INDICATIVE LAYOUT

DCO Submission	LC	GRM	GU	27-02-23	P01
Revision History	Drawn	Checked	Approved	Date	Rev.



Luton Rising
 Our airport. Our community. Our planet.
 Luton Rising
 Hart House Business Centre
 Kington Road, Luton, LU2 0LA
 www.lutonrising.org.uk

London Luton Airport Development Consent Order

Drawing Title
 INDICATIVE FORECOURT MULTISTOREY CAR PARK TYPICAL PLAN

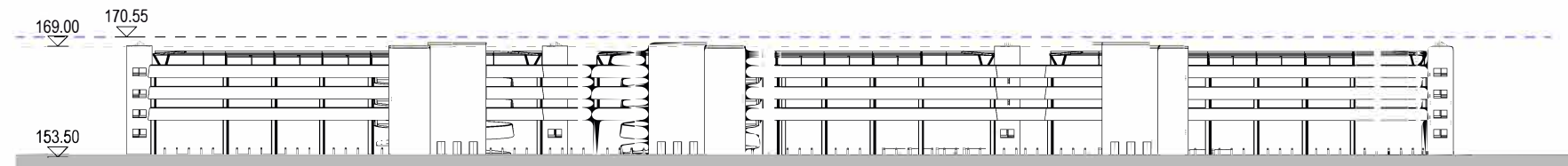
Purpose of issue				Suitability	
DCO SUBMISSION				S6	
Drawn	Checked	Approved	Date	Scale	Size
LC	GRM	GU	27-02-23	1:500	A1
DCO Application Ref.		APFP Regulation	DCO Document Ref.		
TR020001		5(2)(o)	TR020001/APP/4.9		
Drawing Number					Revision
LLADCO-3C-CAP-STR-PRK-DR-AR-1208					P01
Project - Phase - Originator - Asset/Zone - Sub Asset - Type - Discp. - Number					

NOTES

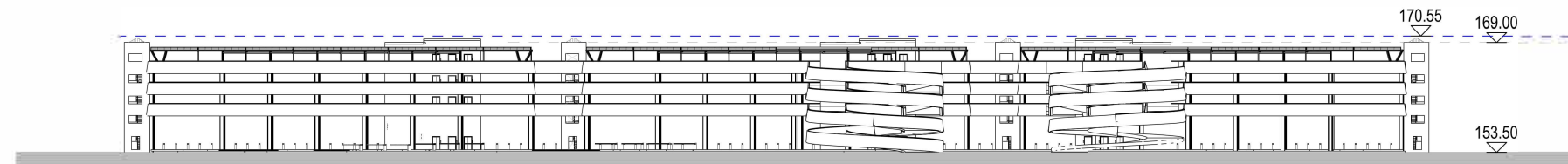
1. This drawing is an indicative layout and can only be used for information purposes.
2. Exact details concerning configuration and dimensions will be determined and designed at the detailed design stage in line with provisions of the DCO.
3. Parameter heights are shown in metres - above ordnance datum (AOD).
4. For wider context, refer to proposed facility P12 on the Scheme Layout Plans (TR020001/APP/4.02).

KEY

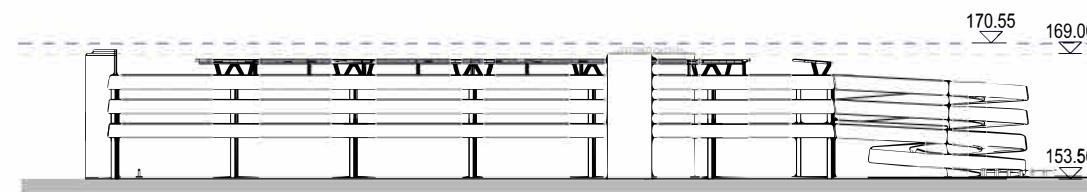
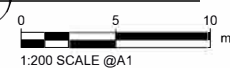
- 177.00 Parameter height (AOD)
- Parameter height lines
- Maximum Parameter height lines



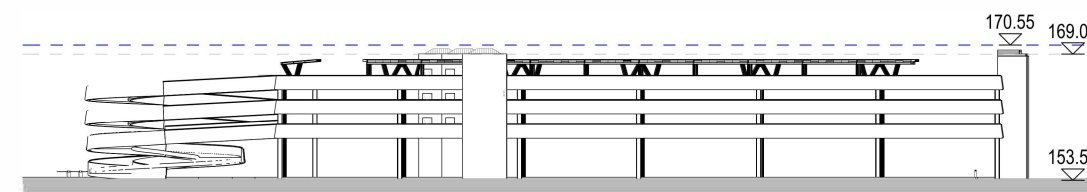
1 South Elevation



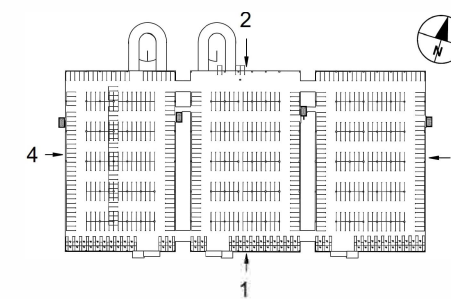
2 North Elevation



3 East Elevation

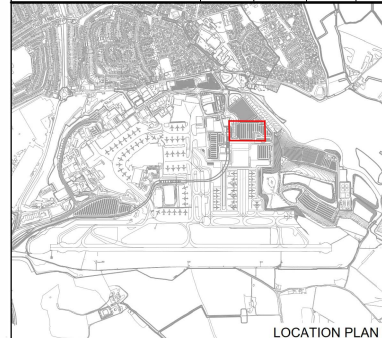


4 West Elevation



INDICATIVE LAYOUT

DCO Submission	LC	GRM	GU	27-02-23	P01
Revision History	Drawn	Checked	Approved	Date	Rev.



Luton Rising
 Our airport. Our community. Our planet.
 Luton Rising
 Hart House Business Centre
 Kimpston Road, Luton, LU2 0LA
 www.lutonrising.org.uk

London Luton Airport Development Consent Order

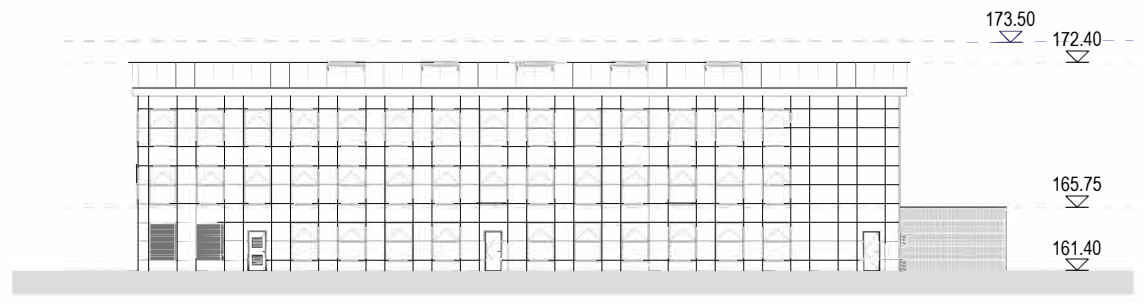
Drawing Title
INDICATIVE MULTISTOREY CAR PARK ELEVATIONS

Purpose of issue				Suitability	
DCO SUBMISSION				S6	
Drawn	Checked	Approved	Date	Scale	Size
LC	GRM	GU	27-02-23	1:500	A1
DCO Application Ref.		AAPP Regulation		DCO Document Ref.	
TR020001		5(2)(o)		TR020001/APP/4.9	
Drawing Number					Revision
LLADCO-3C-CAP-STR-PRK-DR-AR-1210					P01
Project - Phase - Originator - AssetZone - Sub Asset - Type - Discp. - Number					

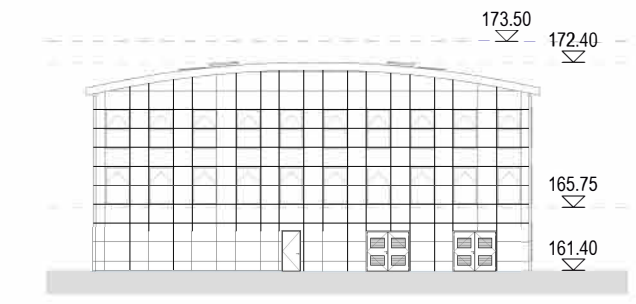
This drawing may contain mapping by permission of Ordnance Survey on behalf of HMSO © Crown Copyright and database rights 2022 Ordnance Survey 0100031673
 All structure positions are indicative. The proposed works will be subject to detailed design/development. The changes will be within limits of deviation specified in the Development Consent Order.

- NOTES**
1. This drawing is an indicative layout and can only be used for information purposes.
 2. Exact details concerning configuration and dimensions will be determined and designed at the detailed design stage in line with provisions of the DCO.
 3. Parameter heights are shown in metres - above ordnance datum (AOD).
 4. For wider context, refer to proposed facility no.13 on the Scheme Layout Plans (TR020001/APP/4.02).

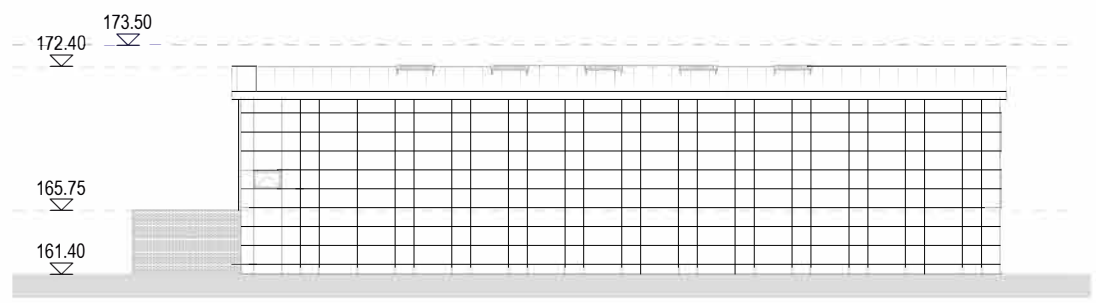
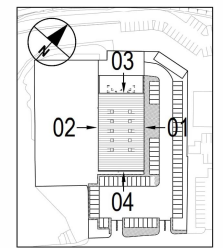
- KEY**
- 177.00 Parameter height (AOD)
 - Parameter height lines
 - Maximum Parameter height lines



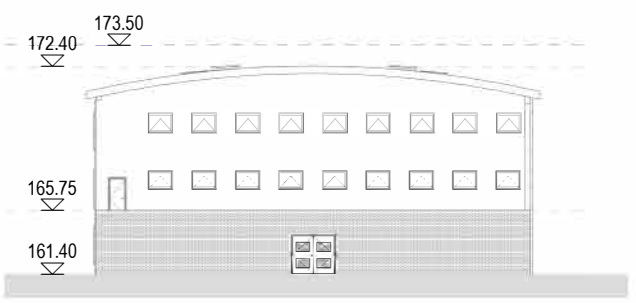
1 North East Elevation
 1:200 SCALE @A1



3 North West Elevation
 1:200 SCALE @A1



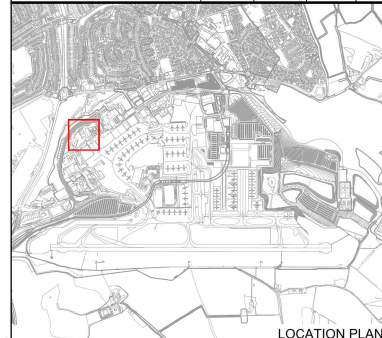
2 South West Elevation
 1:200 SCALE @A1



4 South East Elevation
 1:200 SCALE @A1

INDICATIVE LAYOUT

DCO Submission	LC	GRM	GU	27-02-23	P01
Revision History	Drawn	Checked	Approved	Date	Rev.



London Luton Airport Development Consent Order

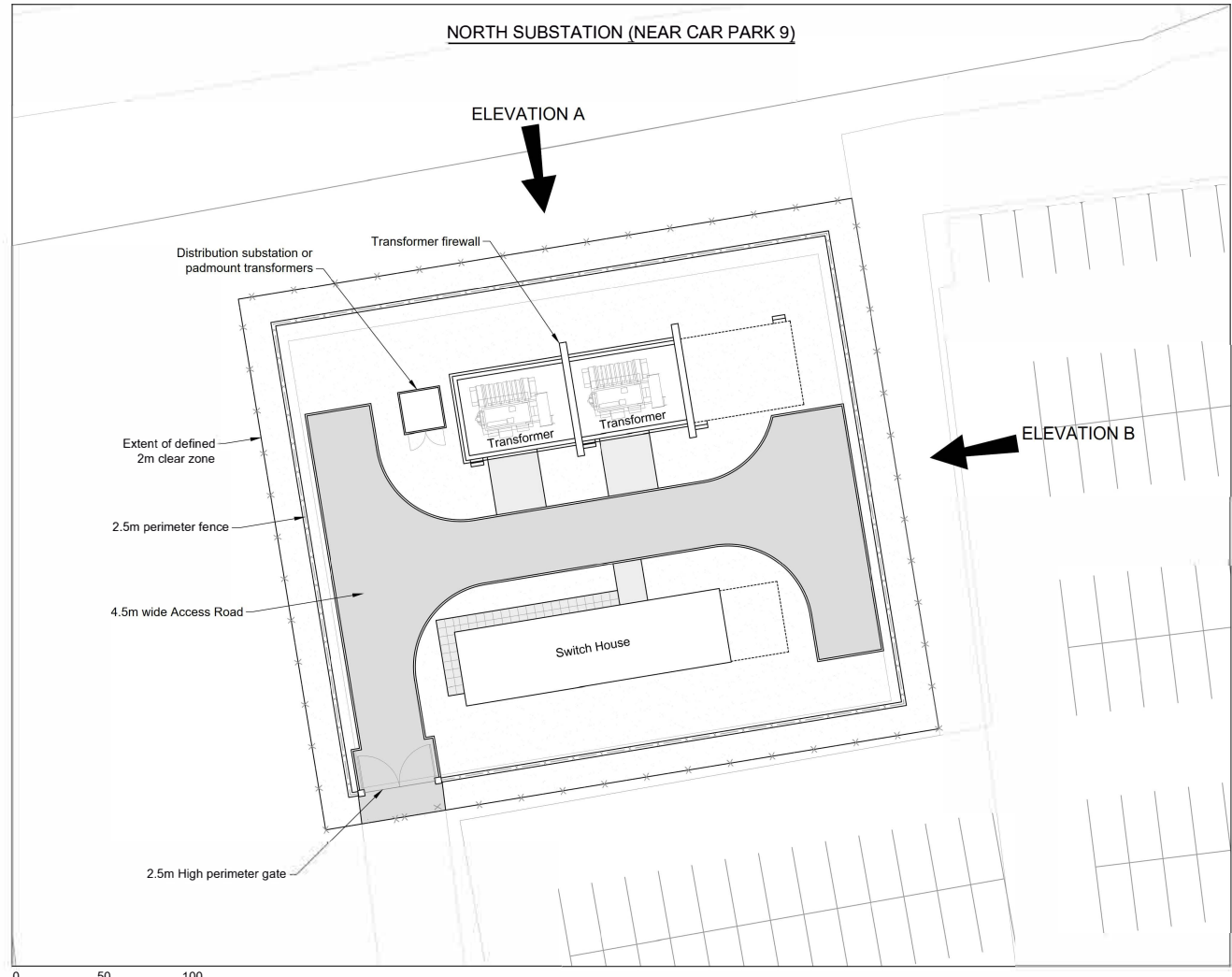
Drawing Title
INDICATIVE POLICE STATION ELEVATIONS

Purpose of issue				Suitability	
DCO SUBMISSION				S6	
Drawn	Checked	Approved	Date	Scale	Size
LC	GRM	GU	27-02-23	1:200	A1
DCO Application Ref		APEP Regulation		DCO Document Ref	
TR020001		5(2)(o)		TR020001/APP/4.9	
Drawing Number					Revision
LLADCO-3C-CAP-STR-OFC-DR-AR-1342					P01
Project - Phase - Originator - Asset/Zone - Sub Asset - Type - Discp - Number					

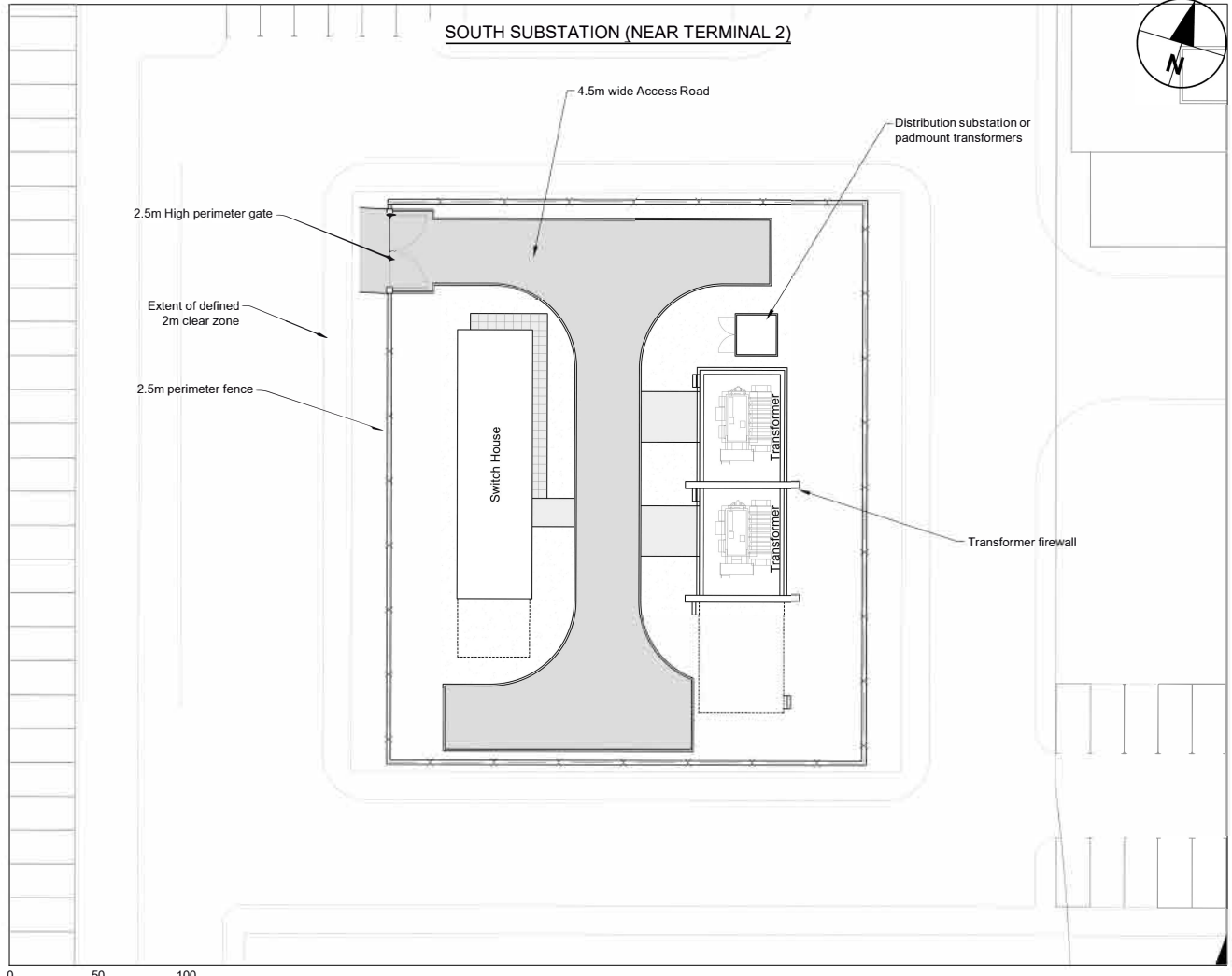
- NOTES**
1. All dimensions in metres unless otherwise stated.
 2. Exact details concerning configuration and dimensions will be determined and designed at the detailed design stage in line with provisions of the DCO.
 3. For wider context, refer to proposed facility no.2 and 5 on the Scheme Layout Plans (TR020001/APP/4.02).

KEY

--- Maximum Parameter height lines



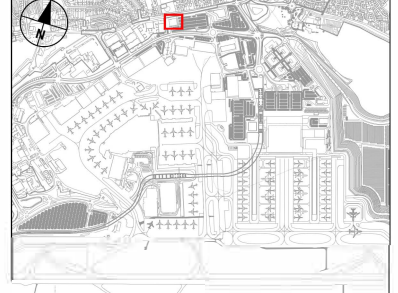
1:2000 SCALE @A1



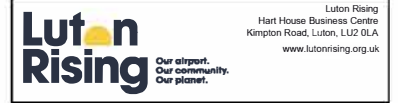
1:2000 SCALE @A1

INDICATIVE LAYOUT

DCO Submission	SW	SR	MS	27-02-23	P01
Revision History	Drawn	Checked	Approved	Date	Rev.



LOCATION PLAN



London Luton Airport Expansion Development Consent Order

INDICATIVE SUBSTATION LAYOUT & ELEVATIONS

DCO SUBMISSION					Suitability
Drawn	Checked	Approved	Date	Scale	Size
SW	SR	MS	27-02-23	AS SHOWN	A1
DCO Application Ref.	APFP Regulation	DCO Document Ref.			
TR020001	5(2)(a)	TR020001/APP/4.9			
Drawing Number					Revision
LLADCO-3C-ACM-AIR-UTL-DR-CE-0020					P01
Project - Phase - Originator - Asset/Zone - Sub Asset - Type - Disc. - Number					

